

# ALPINE<sup>®</sup> SERVICE

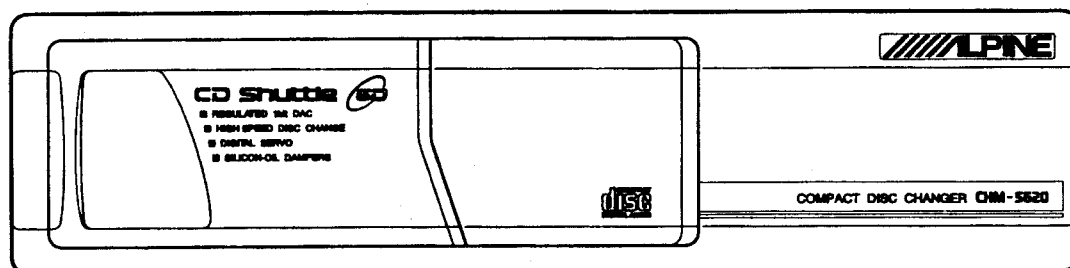


ALPI-00488

# MANUAL

## Compact Disc Remote Changer

CD Shuttle



# CHM-S620

---

# Contents

---

Packing Assembly Parts List .....	3
Packing Method View .....	3
Specifications .....	4
Servo Monitor .....	5 to 10
Block Diagram .....	11
Parts Layout on P.W. Boards and Wiring Diagram (1/2) .....	13, 14
Parts Layout on P.W. Boards and Wiring Diagram (2/2) .....	15, 16
Schematic Diagram (1/2) .....	17 to 19
Schematic Diagram (2/2) .....	20 to 22
Description of IC Terminal .....	23, 24
Electrical Parts List .....	25 to 28
Exploded View (Cabinet) .....	29, 30
Cabinet Assembly Parts List .....	31
Semi-Conductor Lead Identifications .....	32
Exploded View (CD Mechanism) (DT23L060) .....	33, 34
CD Mechanism Assembly Parts List .....	35

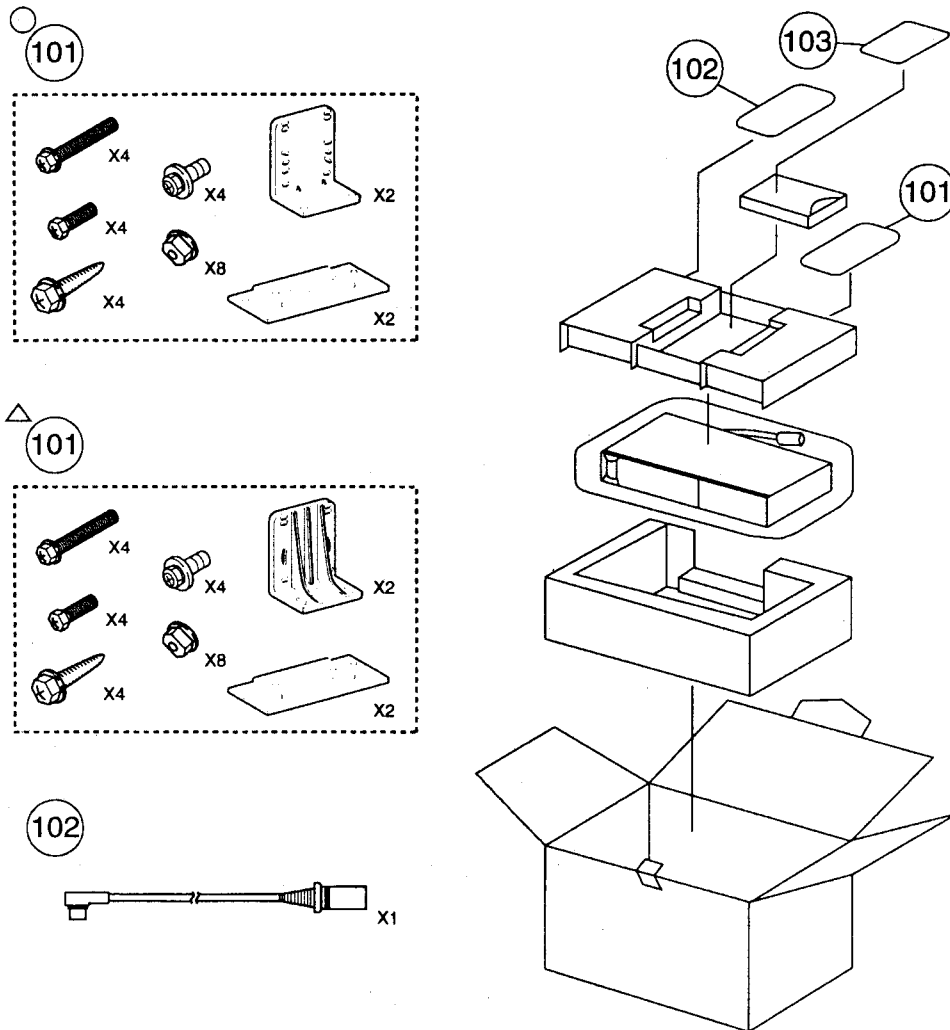
---

# Packing Assembly Parts List

Symbol No.	Part No.	Description	Symbol No.	Part No.	Description
○ 101	01C71646W02	Assy., Kit Installation			
△ 101	01C71646W01	Assy., Kit Installation			
102	01T45150W03	Assy., DIN Cable			
103-1	68P11646Y59	Owner's Manual			
△ 103-2	68P21523Y03	Owner's Manual (I/G/S)			
103-3	15A20849Y01	Cover, Plate L/R			

NOTE : ○ : For North American Model Only, △ : For General Foreign Model Only, Others : Common.

## Packing Method View



NOTE : ○ : For North American Model Only, △ : For General Foreign Model Only, Others : Common.

# Specifications

## < CD SECTION >

System .....	Optical (Compact Disc System)
Quantizing Bit Number .....	16 Bit Linear System
Channels .....	2 Channels, Stereo
Distortion (997Hz) .....	0.02%
Frequency Response (Ref. 1kHz) .....	±2dB (17Hz-19.997kHz)
S/N Ratio .....	90dB
Channel Separation .....	75dB (997Hz) 65dB (10.007kHz)
De-Emphasis (Ref. 1kHz) .....	-20±3dB (4kHz) -20±3dB (16kHz)
Currents Consumption (at PLAY) .....	1A

## < GENERAL >

Power Supply .....	14V DC (10.5-16V allowable)
Output Voltage/Impedance .....	850±150mV/10kohm
Dimensions (W×H×D) .....	255×63×161.5mm
Weight .....	1.7kg

## < COMPACT DISC >

Track Pitch .....	1.6μm
Modulator Frequency .....	44.1kHz
Transfer Rate .....	4.3218 Mbit/sec.
Dimensions .....	120×1.2mm

Note : Due to Continuing product improvement, specifications and designs are subject to change without notice.

# Servo Monitor (Part No. 01E20845S01)

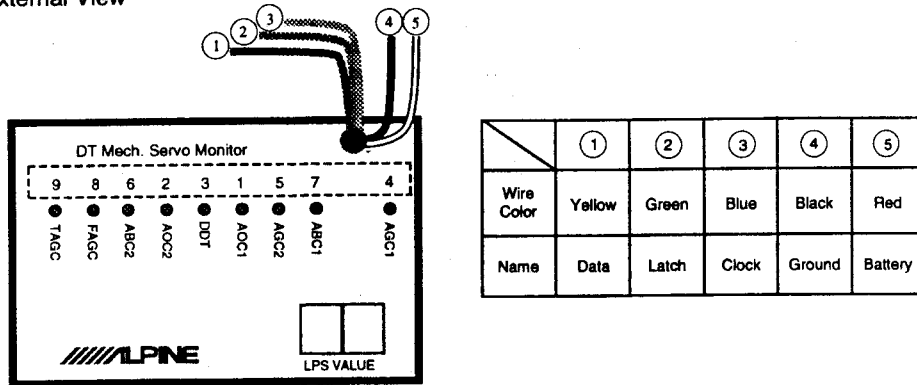
## I. Purpose

CHM-S620 performs digital signal processing in the inside of Super 1 chip LSI and the outside alignment circuit builds in to this LSI and each alignments are automatic.

This DT Mechanism Servo Monitor is a jig for the automatic alignment circuitry. Please refer to the following list for the reference;

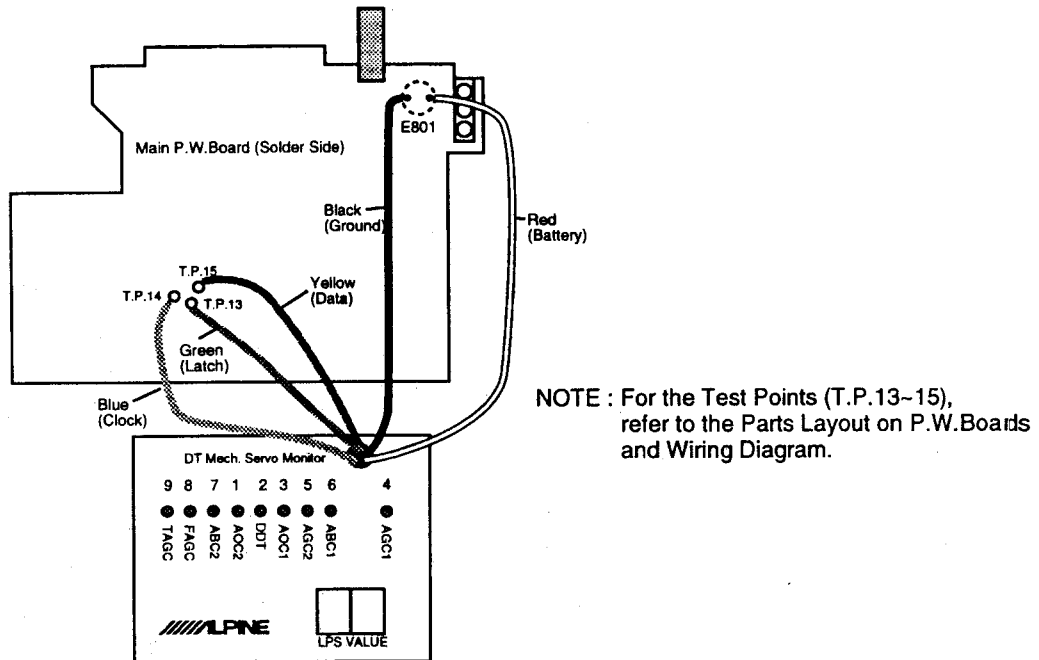
1. LED indicates the alignment.
2. Diagnosis of automatic alignment.
3. LED indicates a failure item for easy failure analysis of servo circuitry.

### External View



\* The numbers of the automatic alignment sequence.

## II. Connection Points and Connection Method



Connect each of the wires to the Test point as illustrated in the diagram.

\* Be very careful not to shorts the test points since they are located close together.

III. Operating Specifications

The automatic adjustment operations of the CHM-S620 are performed by output of the commands of the various adjustment items from the main microprocessor. Adjustments are performed in response to these commands by the super 1-chip LSI. This servo monitor jig receives the signal returned to the main microprocessor from the super 1 chip LSI and causes the LED to light or go off. The adjustment condition (of either completed or not yet completed) of the various adjustment items can be checked using the lighting condition of this LED. The following test discs are required for the good/fault judgment:

1. A-BEX TCD-721 (6th track - 1.2mm) : Scratch test disc
2. A-BEX TCD-782 : Signal test disc

**Measures to be Taken Corresponding to the LED Indication**

1. When a LED other than FAGC or TAGC lights, perform the fault causation analysis using the fault diagnosis chart according to the LED indication.
2. When only the FAGC or TAGC LED turn on a lights (indicating that the focus/tracking fine gain adjustment is not completed), perform the focus/tracking servo gain adjustment. If the value is within the specification, the adjustment is normal.

i) LED indications

Lit : Fault      Unit : OK

Adjustment Order	LED Name	Adjustment Order	Contents
1	AOC1	Focus offset adjustment	Corrects the focus error value as an offset.
2	AOC2	Tracking offset adjustment	Corrects the tracking error value as an offset.
3	DDT	Disc detection	Detects the presence or absence of a disc.
4	AGC1	Focus rough gain adjustment	Determines the amount of external interference applied at the time of the focus rough gain adjustment.
5	AGC2	Tracking rough gain adjustment	Determines the amount of external interference applied at the time of the tracking rough gain adjustment.
6	ABC2	Tracking balance adjustment	Corrects the average value of the tracking error as a balance value.
7	ABC1	Focus balance adjustment	Provides correction so that the focus error signal can take balance between positive sections and negative sections.
8	FAGC	Focus fine gain adjustment	Introduces external interference and adjusts the focus gain to an appropriate value.
9	TAGC	Tracking fine gain adjustment	Introduces external interference and adjusts the tracking gain to an appropriate value.

ii) Seven-Segment LED (LPS Value)

This mechanism has 13 position of 1T to 6T, 1P to 6P, E.

Those positions indicate height of elevator of mechanism in 7 segment LED in hexadecimal.

IC501 reads data from these positions and convert into A/D signal. Hexadecimal and tray location refer to the following list.

\* The 1st to 6th disc trays step each 1T to 6T draw out of magazine.

The 1st to 6th discs step each 1P to 6P to disc chuck and play.

E is the position that magazine ejects.

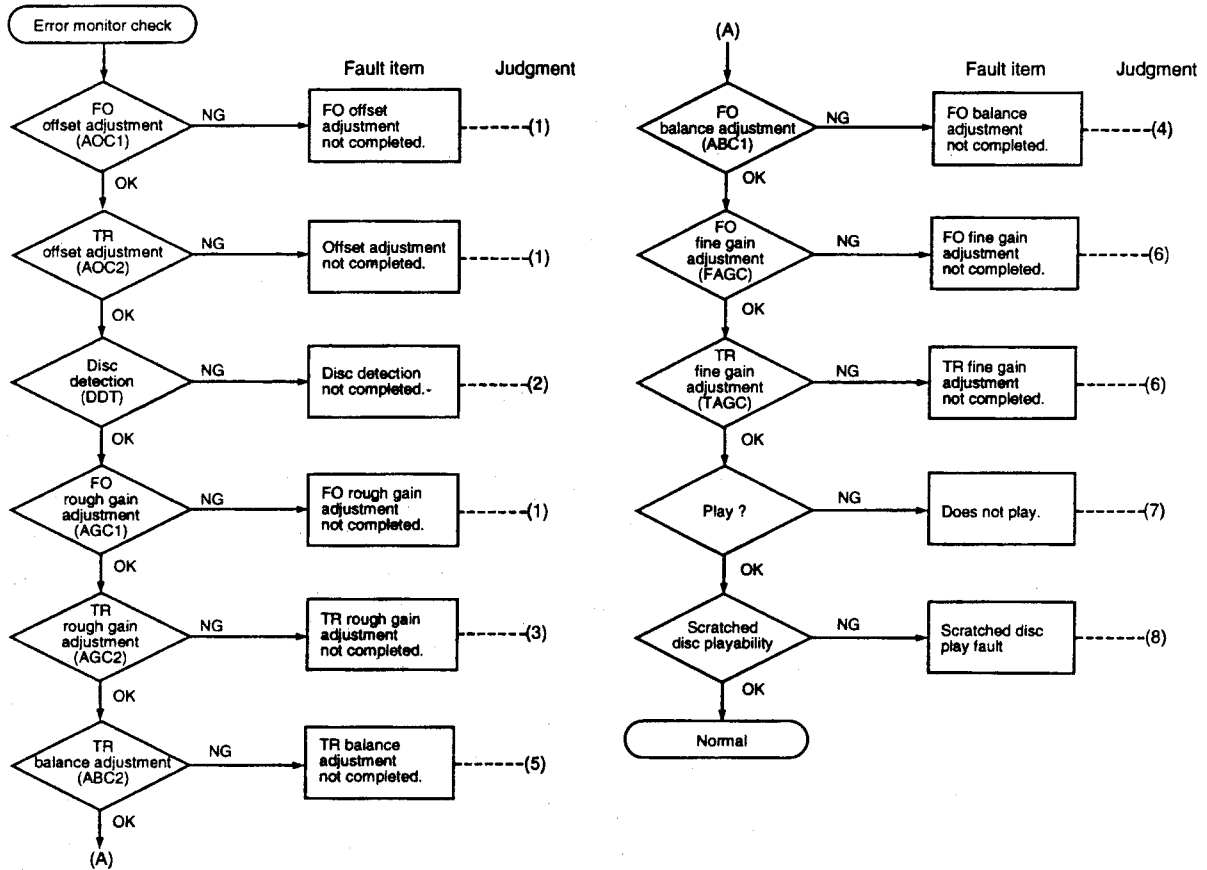
Position	Ratio of Resistance Value (%)	Hex Code
6P	91.00	F2-F8
5P	78.76	D3-D7
6T	76.17	C1-C5
4P	66.52	63-67
5T	63.94	A2-A6
3P	54.29	93-97
4T	51.70	82-86
2P	42.05	74-78
3T	39.46	63-67
1P	29.81	55-59
2T	27.22	44-48
1T	15.95	27-31
E	5.00	0B-0F

NOTE 1 : Display of each position is value of limit of HEX code, liner position sensor is normal.

NOTE 2 : In case of LPS is normal and disc change actuating is not smooth, check magazine circumference tray chassis again.

IV. Fault Diagnosis Chart

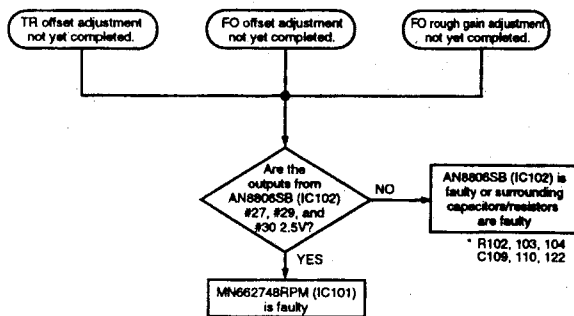
Main Flow Chart



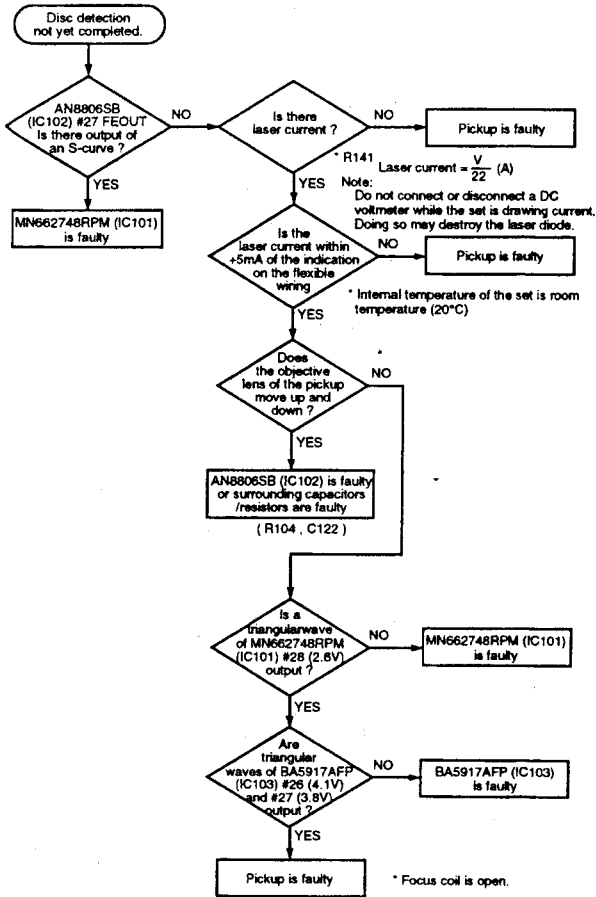
\* Notes

- 1) When more than one LED are light, perform a circuit check according to the order of the main flow chart.
- 2) Proper soldering of patterns and IC pins is a precondition. Accordingly, when an IC fault is reached in the flow chart, do not replace the part immediately; check the soldering (for loose and bridges).
- 3) Faults such as faulty capacitors and resistors in the flow include bad parts, different constants, looseness, and cracks.
- 4) Use track 6 of A-BEX TCD-721 for the scratched disc playability check.

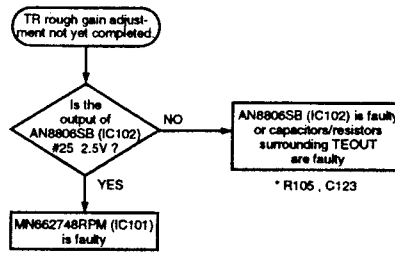
Judgments (1)



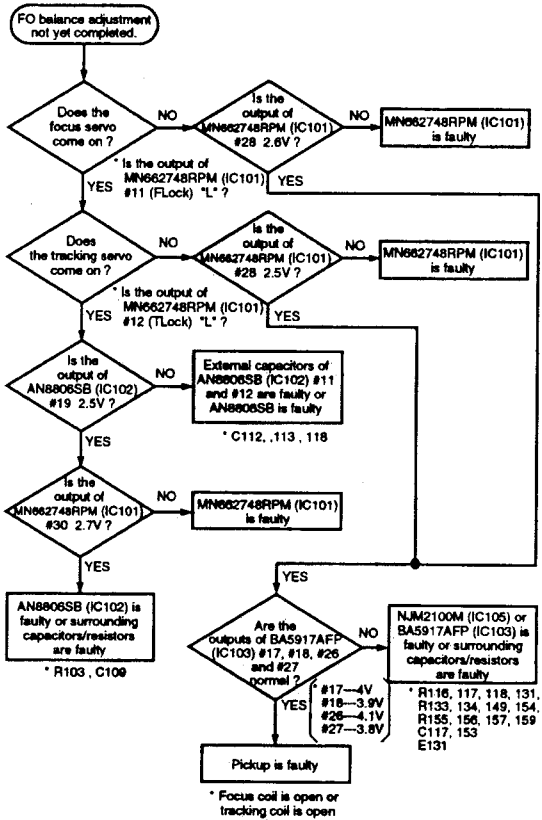
Judgments (2)



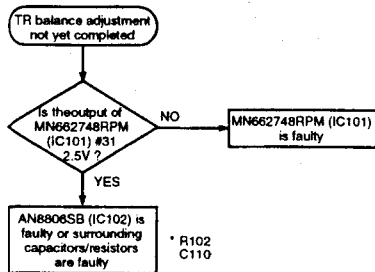
Judgments (3)



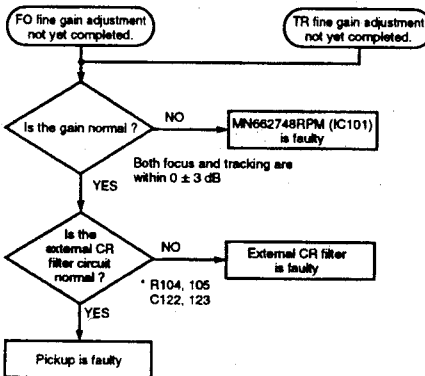
Judgments (4)



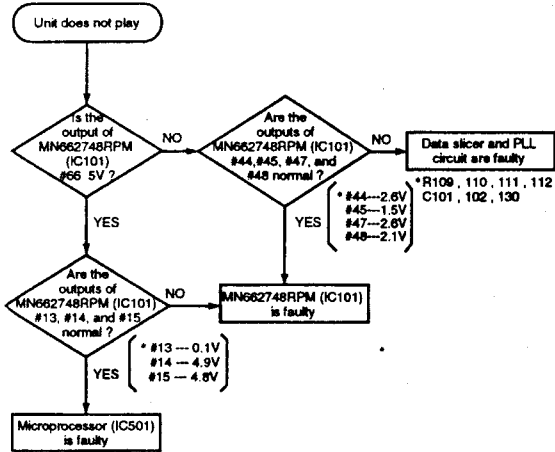
Judgments (5)



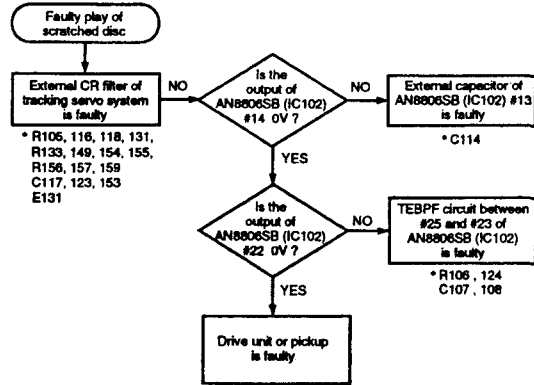
Judgments (6)



Judgments (7)



Judgments (8)



Measurements

A. RF Signal Level Measurement

The main beam of the returning light is received by the photodiode and the output voltage is obtained by current-voltage conversion of A+B+C+D.

1. Block Diagram



2. Measurement Method

- (a). Connect the ground terminal of the oscilloscope VREF (AN8806SB (IC102), PIN 20) and measure the RF signal (of AN8806SB (IC102), pin 7).
- (b). Play the first track of the measurement disc A-BEX TCD-782.
- (c). Read the peak-to-peak value of the waveform.  
Specification: 0.5V ±0.2  
\* When the value is outside of the specification (i.e., not good), check AN8806SB (IC102), the pickup, and R101.

B. Jitter Measurement

The standard deviation of the pulse width when a trigger is applied to the rising edge of the 3T component of the RF signal.

1. Block Diagram



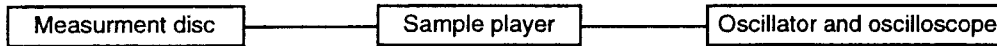
2. Measurement Method

- (a). Connect the ground terminal of the jitter meter to VREF (AN8806SB (IC102), PIN 20) and measure the ARF signal (of AN8806SB (IC102), pin 10).
- (b). Play the first track of the A-BEX TCD-782 measurement disc.
- (c). Read the indicated value of the jitter meter.  
Specification: 25nS or less  
\* When the value is outside of the specification, check AN8806SB (IC102), the pickup, and R101.

### C. Focus Servo Gain Measurement

Measure the focus servo oper. loop gain in the servo-on (closed loop) condition.

#### 1. Block Diagram

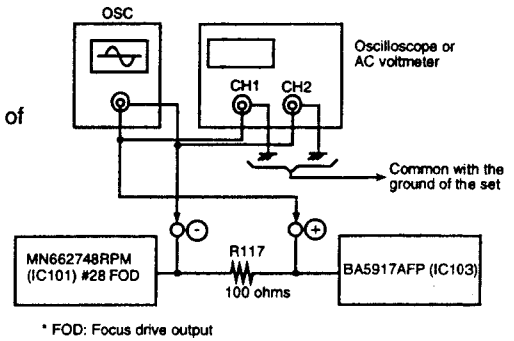


#### 2. Measurement Method using an Oscillator and an Oscilloscope

- (a). Connect OSC output to resistor for gain measurement (100 ohms).  
(Connect a servo driver side to positive side.)
- (b). Connect CH1 of oscilloscope to a servo driver side of resistor for gain measurement (100 ohms).  
(Connect negative side with GND of set.)
- (c). Connect CH2 of oscilloscope to MN662748RPM (IC101) side of resistor for gain measurement (100 ohms).  
(Connect negative side with GND of set.)
- (d). Play back the eighth track of A-BEX TCD-782 disc for measurement. (No sound recording track)
- (e). Output frequency (1.2 kHz, 50 mVP-P) from OSC and compare the amplitude of CH1 and CH2 of oscilloscope and convert into dB.

**NOTE:** AC voltmeter is available to measurement.

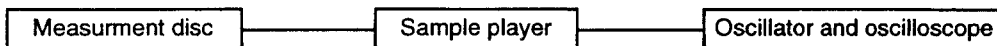
#### 3. Connection (Example)



### D. Tracking Servo Gain Measurement

Measure the tracking servo open loop gain in the servo-on (closed loop) condition.

#### 1. Block Diagram

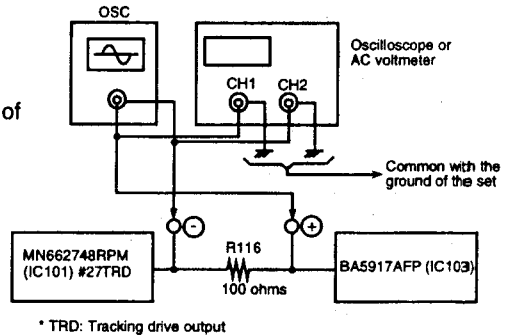


#### 2. Measurement Method using an Oscilloscope

- (a). Connect OSC output to resistor for gain measurement (100 ohms).  
(Connect a servo driver side to positive side.)
- (b). Connect CH1 of oscilloscope to a servo driver side of resistor for gain measurement (100 ohms).  
(Connect negative side with GND of set.)
- (c). Connect CH2 of oscilloscope to MN662748RPM (IC101) side of resistor for gain measurement (100 ohms).  
(Connect negative side with GND of set.)
- (d). Play back the eighth track of A-BEX TCD-782 disc for measurement. (No sound recording track)
- (e). Output frequency (1.2 kHz, 50 mVP-P) from OSC and compare the amplitude of CH1 and CH2 of oscilloscope and convert into dB.

**NOTE:** AC voltmeter is available to measurement.

#### 3. Connection (Example)





# MEMO

# Parts Layout on P.W. Boards and Wiring Diagram (1/2)

1

Main P.W. Board (Component Side View)

2

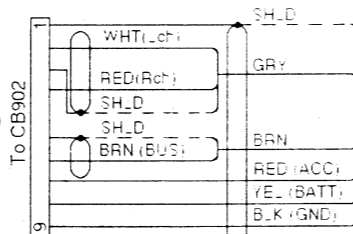
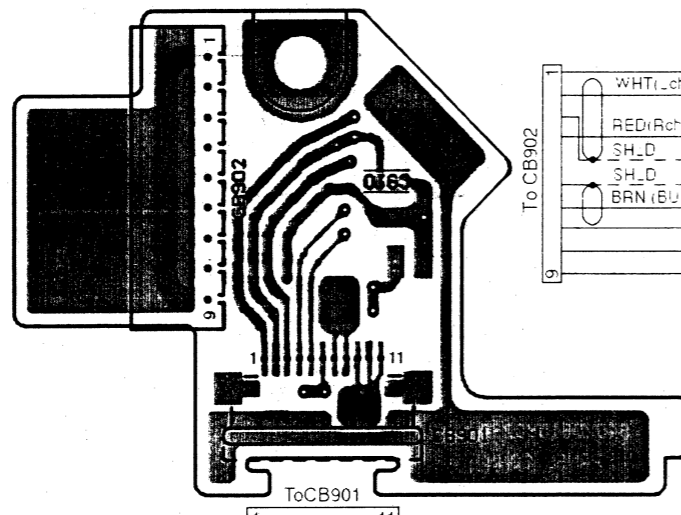
Be sure to short-circuit patterns when removing Pick-Up Unit

3

HD101  
Pick-Up Unit, EP21A610

4

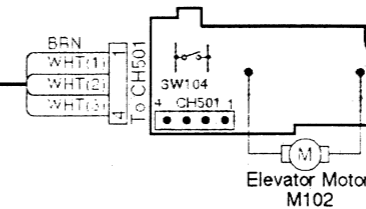
Connector P.W. Board  
(Component Side View)



ET901  
Assy. DIN Connector

5

Elevator P.W. Board  
(Foil Side View)



Gray Color Pattern : Component Side Pattern  
Blue Color Pattern : Foil Side Pattern

A

B - 13 -

C

D

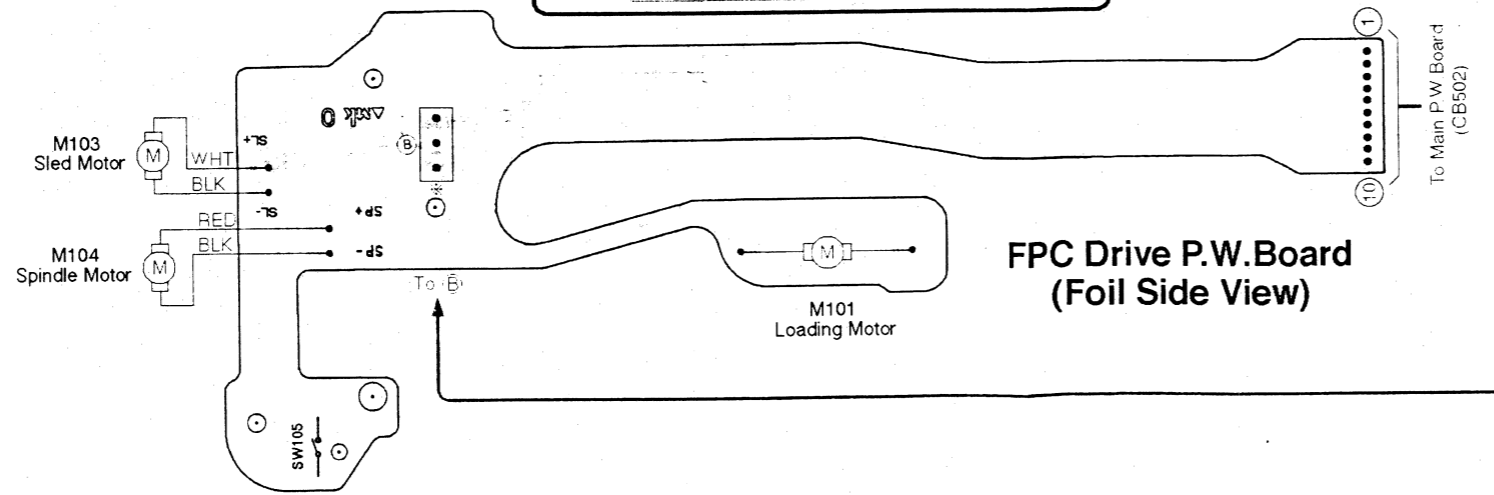
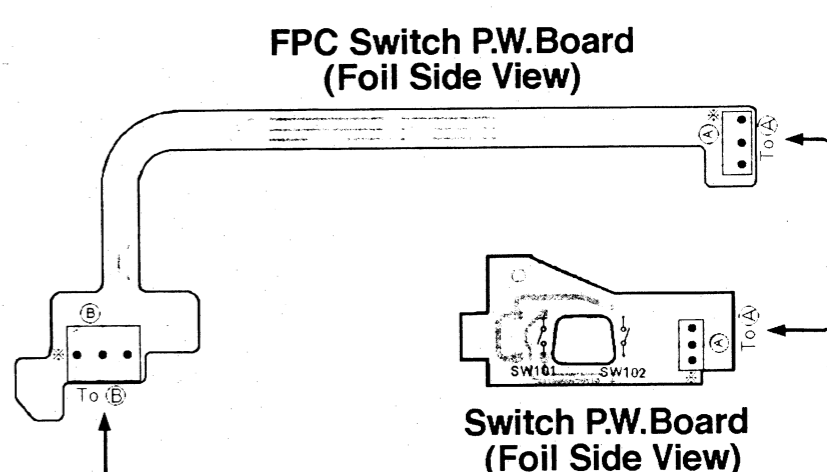
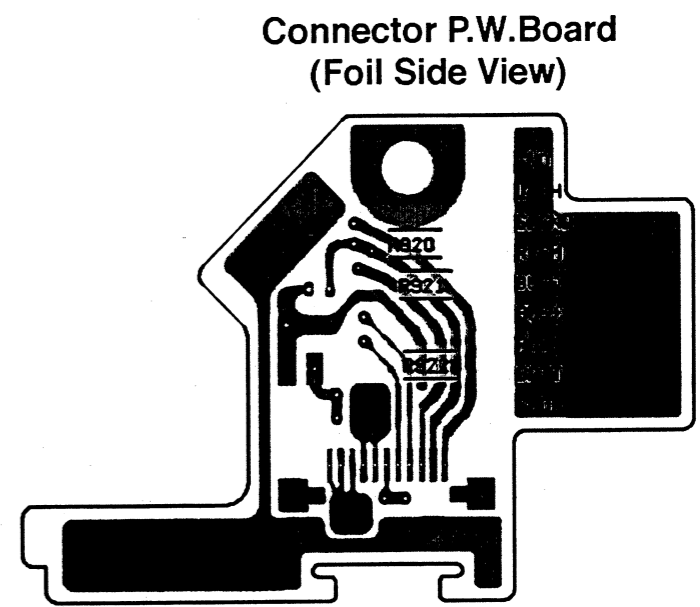
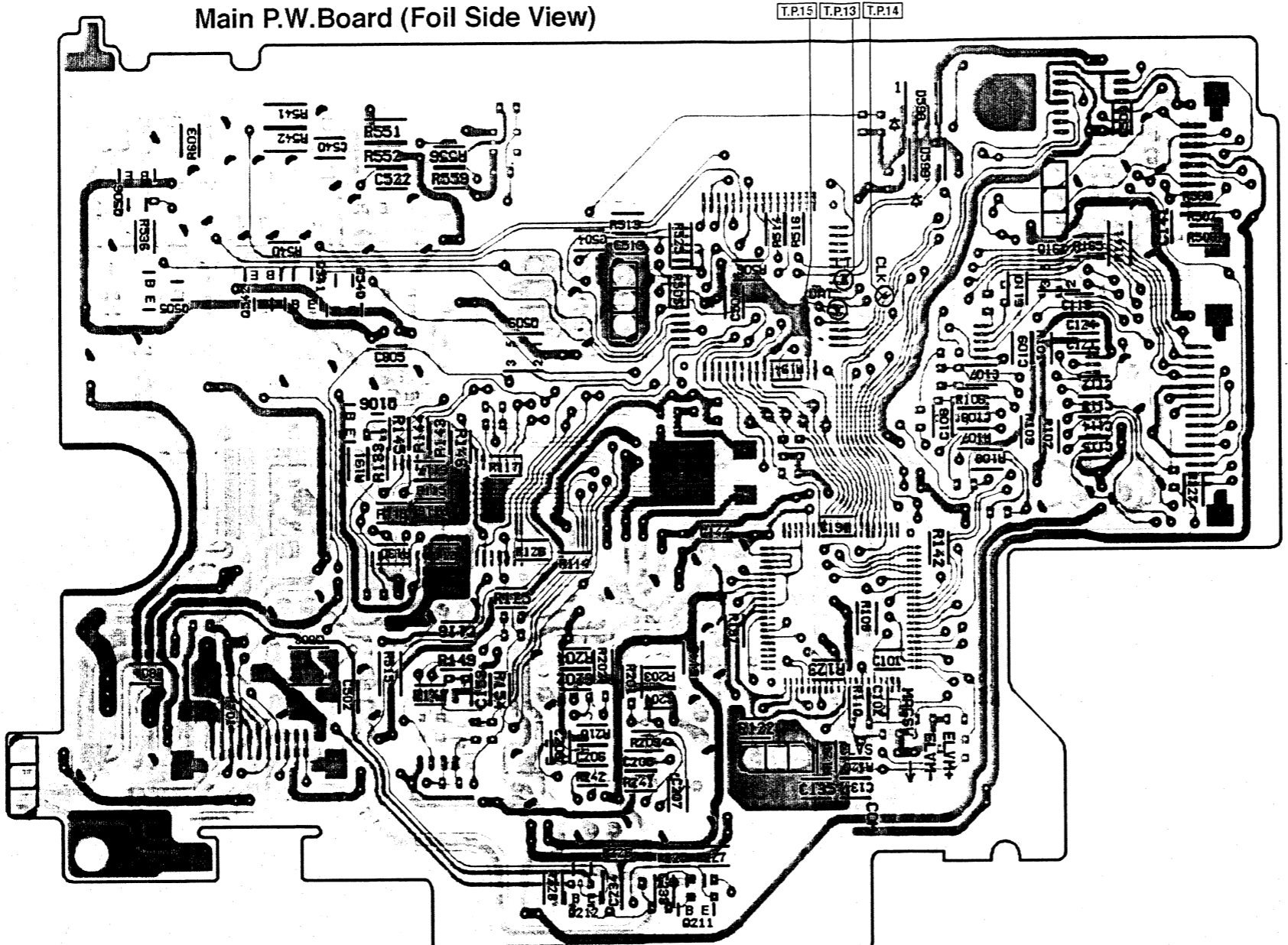
E

F - 14 -

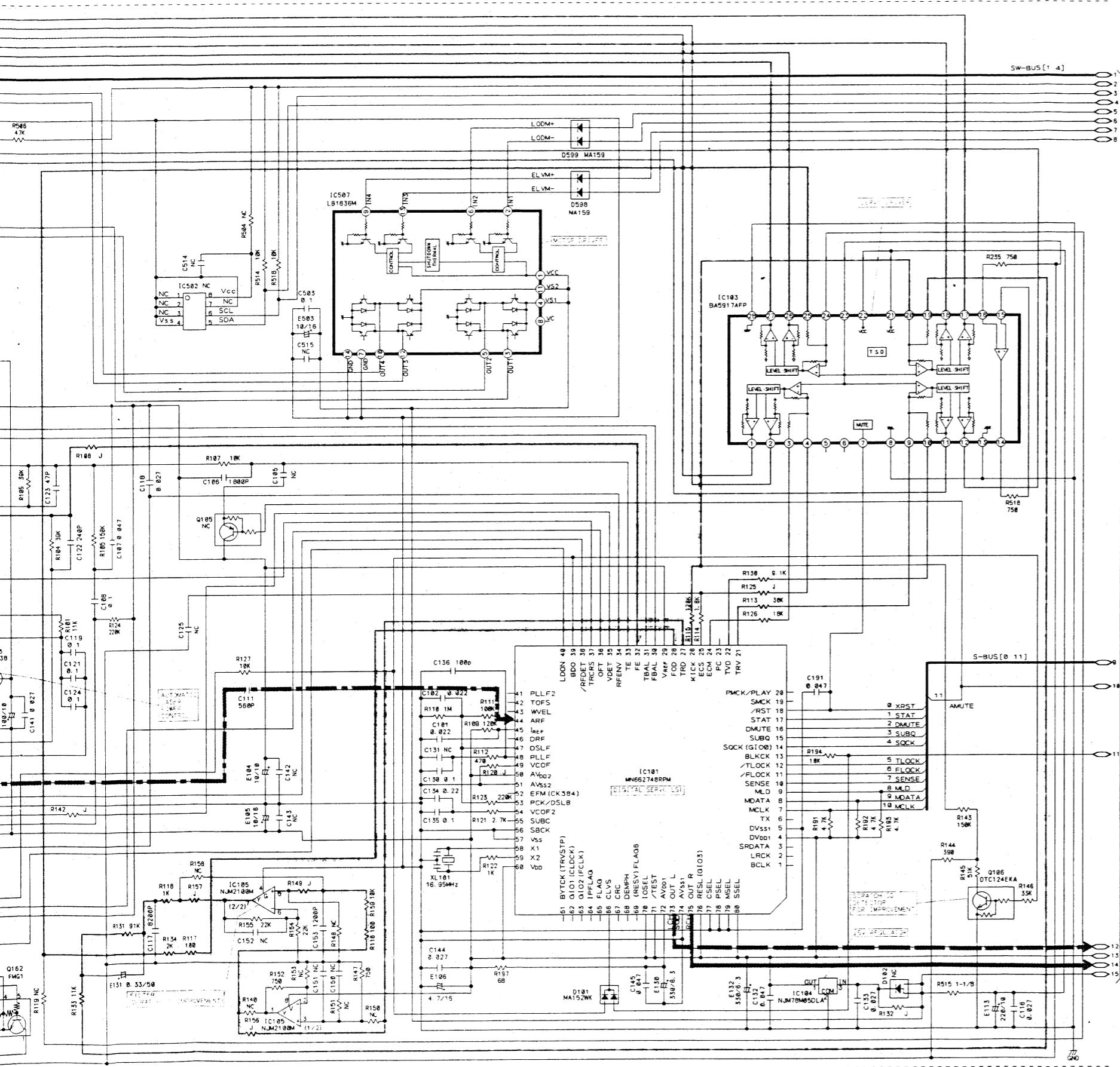
G

# Parts Layout on P.W. Boards and Wiring Diagram (2/2)

1  
2  
3  
4  
5  
A | B - 15 - | C | D | E | F - 16 - | G |



Gray Color Pattern : Component Side Pattern  
Blue Color Pattern : Foil Side Pattern



IC101

1	NC	21	2.6V	41	NC	61	NC
2	NC	22	2.6V	42	NC	62	NC
3	NC	23	NC	43	NC	63	NC
4	5.1V	24	2.6V	44	2.6V	64	NC
5	0V	25	2.5V	45	1.3V	65	NC
6	NC	26	2.6V	46	NC	66	5.1V
7	5V	27	2.5V	47	2.6V	67	5.1V
8	5V	28	2.7V	48	1.7V	68	NC
9	5.1V	29	2.6V	49	0V	69	5.1V
10	0V	30	2.3V	50	5.1V	70	5.1V
11	0V	31	2.6V	51	0V	71	5.1V
12	0V	32	2.6V	52	NC	72	4.9V
13	0.1V	33	2.6V	53	2.8V	73	2.4V
14	4.9V	34	2.6V	54	2V	74	0V
15	3V	35	0V	55	NC	75	2.4V
16	0V	36	0V	56	0V	76	5.1V
17	5V	37	0.9V	57	0V	77	0V
18	5V	38	0V	58	2.6V	78	0V
19	NC	39	0V	59	2.6V	79	0V
20	NC	40	5V	60	5.1V	80	5.1V

IC102

1	NC	19	2.5V
2	NC	20	2.5V
3	0V	21	5.1V
4	NC	22	0V
5	5.1V	23	2.5V
6	2.6V	24	0.9V
7	2.9V	25	2.5V
8	2.6V	26	2.6V
9	3.8V	27	2.6V
10	1.6V	28	2.6V
11	4V	29	2.6V
12	3.3V	30	2.6V
13	3.8V	31	2.6V
14	0V	32	2.6V
15	3.7V	33	2.6V
16	0V	34	2.6V
17	0V	35	2.6V
18	0V	36	2.6V

IC103

1	4.4V	15	2.6V
2	3.6V	16	2.6V
3	2.6V	17	3.9V
4	2.6V	18	4V
5	0V	19	2.6V
6	1.7V	20	2.6V
7	5V	21	7.9V
8	0V	22	7.9V
9	2.6V	23	2.6V
10	2.6V	24	2.6V
11	4V	25	2.7V
12	4V	26	4.2V
13	0V	27	3.8V
14	2.5V	28	0V

IC104

1	5.1V
2	0V
3	7.9V

IC507

1	7.9V	8	1.9V
2	4.9V	9	4.5V
3	0V	10	0V
4	8V	11	8V
5	0V	12	0V
6	4.5V	13	4.5V
7	0V	14	0V

IC105

1	2.6V
2	2.6V
3	2.6V
4	0V
5	2.5V
6	2.6V
7	2.5V
8	5.1V

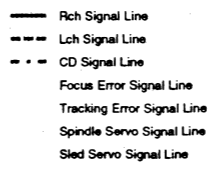
	E	C	B
Q103	4.4V	2.5V	3.8V
Q106	0V	2.6V	0V

	1	2	3	4	5
Q162	2.6V	0V	5V	0V	0V

[Measuring Conditions]

- Power Supply Voltage : DC14V
- Measuring Meter : Digital Multi Voltmeter
- Measuring Point Reference : Between Ground
- Measuring Conditions : Playing Music Disc No. 1 at Room Temperature

**NOTE:**  
 1. All resistance values are in ohms. K = 1,000  
 2. All capacitance values are in microfarads. P = 1/1,000,000



# Schematic Diagram (1/2)

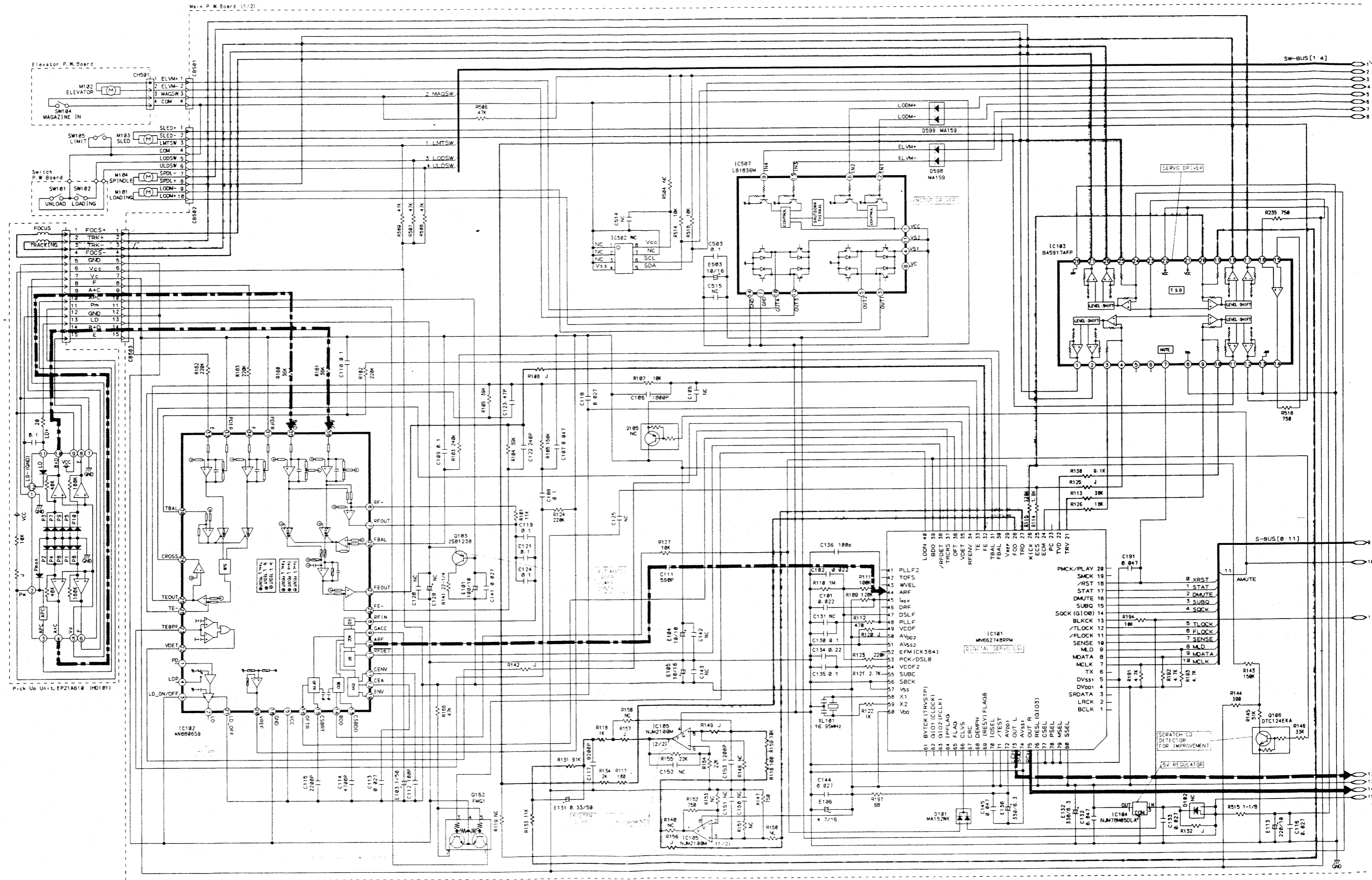
1

2

3

4

5



A

B -17-

C

D

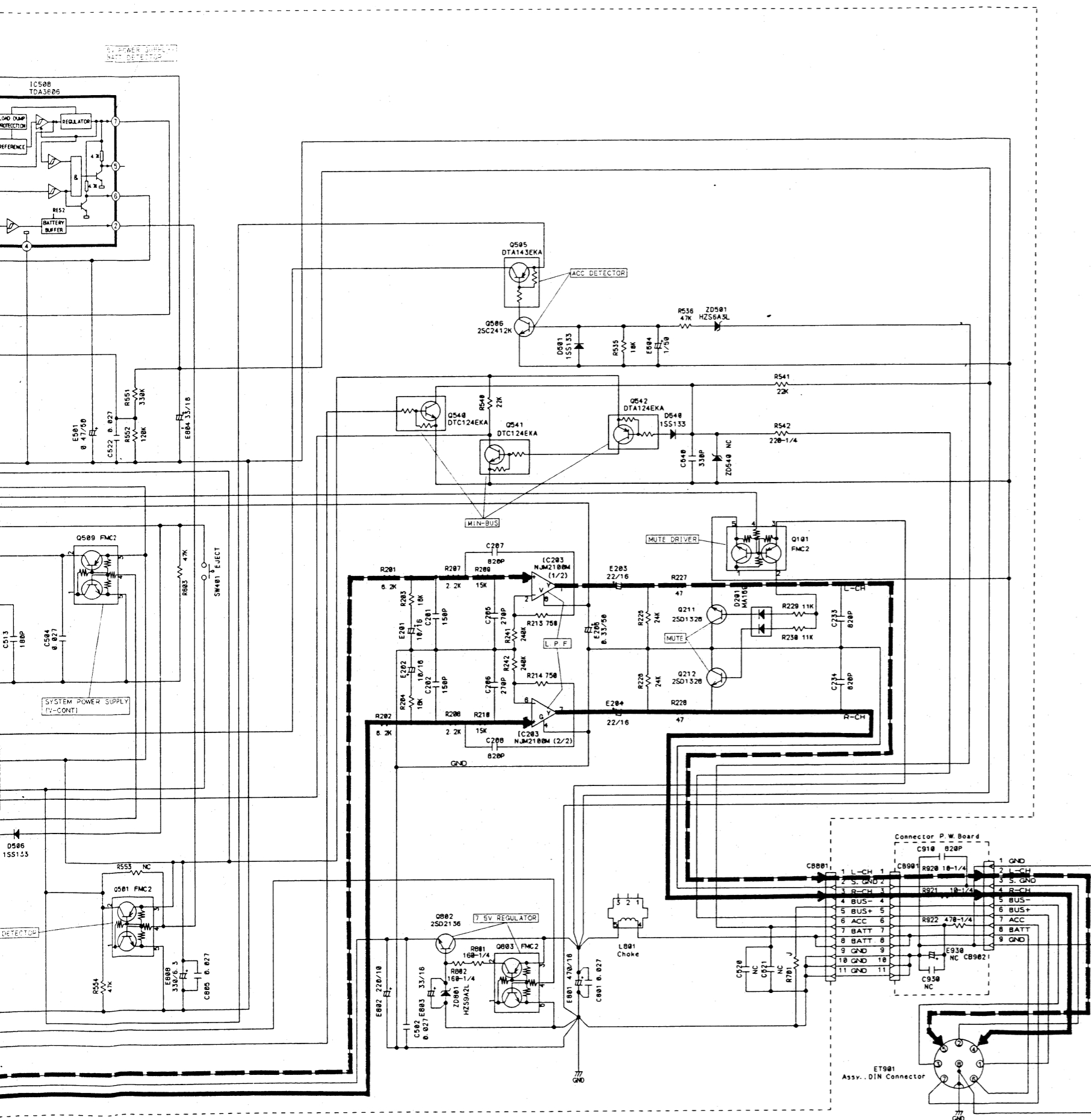
E

F -18-

G

H

TO Main P.W. Board (1/2)



IC203		IC501						IC508			
1	2.5V	1	NC	17	NC	33	0V	49	0V	1	3.6V
2	2.5V	2	1.4V	18	0V	34	5V	50	5V	2	4.9V
3	2.5V	3	NC	19	NC	35	5V	51	0V	3	2.7V
4	0V	4	NC	20	NC	36	4.5V	52	5V	4	0V
5	2.5V	5	NC	21	NC	37	5V	53	5.1V	5	NC
6	2.5V	6	0.1V	22	4.8V	38	5V	54	0V	6	5V
7	2.5V	7	5V	23	0V	39	0.1V	55	5V	7	5V
8	5.1V	8	NC	24	0V	40	5V	56	5V	8	13.8V
9	0V	9	0V	25	0V	41	2.5V	57	2.6V		
10	5V	10	5V	26	0V	42	2.5V	58	NC		
11	5V	11	5V	27	NC	43	0V	59	4.9V		
12	0V	12	0V	28	5.1V	44	NC	60	NC		
13	5V	13	5V	29	5V	45	0V	61	NC		
14	5V	14	5V	30	5V	46	0V	62	NC		
15	5V	15	5V	31	5V	47	1.7V	63	NC		
16	5V	16	5V	32	0V	48	2.5V	64	NC		

	E	C	B		E	C	B
Q211	0V	0V	-0.3V	Q540	0V	13.3V	1.3V
Q212	0V	0V	0V	Q541	0V	5V	1.3V
Q505	5V	5V	0V	Q542	5.1V	1.3V	5.5V
Q506	0V	0V	0.6V	Q802	8.6V	13.8V	8.1V

	1	2	3	4	5
Q101	NC	-0.3V	13.8V	0V	0V
Q501	NC	5V	5V	5V	0V
Q509	NC	5V	5.1V	5V	0V
Q803	NC	13.6V	13.7V	5V	0V

[Measuring Conditions]

- Power Supply Voltage : DC14V
- Measuring Meter : Digital Multi Voltmeter
- Measuring Point Reference : Between Ground
- Measuring Conditions : Playing Music Disc No. 1 at Room Temperature

NOTE:

1. All resistance values are in ohms. K = 1,000
2. All capacitance values are in microfarads. P =  $\frac{1}{1,000,000}$



# Description of IC Terminal

25203Y01 : IC501

No.	Symbol	I/O	Terminal Description
1	NC	—	No connect terminal.
2	BUS OUT	O	BUS output.
3	NC	—	No connect terminal.
4			
5	SCL	—	Pull up terminal.
6			
7	SDA		
8	NC	—	No connect terminal.
9	VSS	—	GND connect terminal.
10	A0 (LT)	O	Auto adjustment output. (LATCH)
11	A1 (CK)	O	Auto adjustment output. (CLOCK)
12	A2 (DT)	O	Auto adjustment output. (LATCH)
13	ELVM +	O	Elevator motor (+) out put.
14	ELVM -	O	Elevator motor (-) out put.
15	LODM +	O	Loading motor (+) output.
16	LODM -	O	Loading motor (-) output.
17	NC	—	No connect terminal.
18	GND	I	GND connect terminal.
19	NC	—	No connect terminal.
20			
21	STAT	I	Start signal input.
22			
23	TLOCK	I	Tracking servo pull in signal.
24	VSS	—	GND connect terminal.
25	FLOCK	I	Focus servo pull in signal.
26	SENSE	I	Sense signal input.
27	NC	—	No connect terminal.
28	MLD	O	LSI Control latch output.
29	MDATA	O	LSI Control data output.
30	MCLK	O	LSI Control clock.
31	XRST	O	Surroundings reset.
32	D MUTE	O	Digital MUTE output.
33	A MUTE	O	Analog MUTE output.
34	V CONT	O	Power supply control.
35	RESET	I	RESET Input. (L : Active)
36	IRQ/BI	I	BUS Input.
37	BATT	I	BATT Detect.
38	ACC	I	ACC Detect.
39	BLKCK	I	Sub code block clock.
40	VDD	—	+5V

No.	Symbol	I/O	Terminal Description
41	X2	—	System clock 2. (4.19MHz)
42	X1	—	System clock 1. (4.19MHz)
43	GND	—	GND connect terminal.
44	NC	—	No connect terminal.
45	GND	—	GND connect terminal.
46	A V <sub>SS</sub>	—	GND connect terminal.
47	LPS	I	Linear position sensor.
48	TEMP	I	Temperature detect sensor.
49	DOSW	I	Light ON / OFF switch.
50	ULDSW	I	Unloading detect switch.
51	LODSW	I	Loading detect switch
52	MAGSW	I	Magazine detect switch.
53	LMTSW	I	Limit switch.
54	EJKEY	I	Elect KEY input.
55	A V <sub>DD</sub>	—	+5V.
56	A V <sub>REF</sub>	—	+5V.
57	SUBQ	I	SUBQ Input.
58	NC	—	No connect terminal.
59	SQCK	O	SQCK clock output.
60	NC	—	No connect terminal.
61	NC	—	No connect terminal.
62			
64			

# Electrical Parts List

Capacitor :  $\mu$ F=microfarads,pF=picofarads

Abbreviations			Symbol No.	Part No.	Description
RES.= Resistor	CAP.= Capacitor		D540	48T68828F11	1SS133
C.F.= Carbon Film	ELY.= Electrolytic		D598	48T81063F01	CP., MA159
M.F.= Metal Film	CER.= Ceramic		D599	48T81063F01	CP., MA159
M.O.= Metal Oxide Film	MYL.= Mylar		ZD501	48T25766W03	Zener, HZS6A3L
M.P.= Metal Plate	TAN.= Tantalum		ZD801	48T25766W20	Zener, HZS9A2L
TR. = Transistor	POLY.= Polystyrol				
TRANS.= Transformer	PP. = Polypropylene				
CP. = Chip	PLT.= Polyethylene				
	PF. = Polyester Film				
Symbol No.	Part No.	Description	<b>Crystals</b>		
<b>Main P.W.Board</b>			XL101	91T95076F12	16.95MHz
<b>IC's</b>			XL501	91T15285W01	CER., Lock 4.19MHz
IC101	51T15522Y01	MN662748RPM	<b>Switch</b>		
IC102	51T65510W01	AN8806SB	SW401	40T55182W03	Tact, SKHVBB (EJECT)
IC103	51T15547Y02	BA5917AFP	<b>Thermistor / Coil</b>		
IC104	51T95150W01	NJM78M05DLA	TH502	48T15688Y01	CP., 100K ohm
IC105	51T16025W01	NJM2100M	L801	24T65097W01	Coil, Choke
IC203	51T16025W01	NJM2100M	<b>Capacitors</b>		
IC501	51T25203Y01	25203Y01	C101	08T15399W01	CP., 0.022 $\mu$ F
IC507	51T45571W02	LB1836M	C102	08T15399W01	CP., 0.022 $\mu$ F
IC508	51T85450W01	TDA3606	C106	08S65128F60	CP., 1800pF
<b>Transistors</b>			C107	08T15399W03	CP., 0.047 $\mu$ F
Q101	48T73888F12	CP., FMC2	C108	08S35374W01	CP., 0.1 $\mu$ F
Q103	48T84234F03	2SB1238	C109	08S35374W01	CP., 0.1 $\mu$ F
Q106	48T62967F03	CP., DTC124EKA	C110	08S35374W01	CP., 0.1 $\mu$ F
Q162	48T73888F08	CP., FMG1	C111	08S82122F55	CP., 560pF
Q211	48T63788F01	CP., 2SD1328	C112	08S82122F37	CP., 100pF
Q212	48T63788F01	CP., 2SD1328	C113	08T15399W04	CP., 0.027 $\mu$ F
Q501	48T73888F12	CP., FMC2	C114	08S65128F65	CP., 4700pF
Q505	48T62966F01	CP., DTA143EKA	C115	08S65128F61	CP., 2200pF
Q506	48T63417F01	CP., 2SC2412K	C116	08T15399W04	CP., 0.027 $\mu$ F
Q509	48T73888F12	CP., FMC2	C117	08S65128F68	CP., 8200pF
Q540	48T62967F03	CP., DTC124EKA	C118	08T15399W04	CP., 0.027 $\mu$ F
Q541	48T62967F03	CP., DTC124EKA	C119	08S35374W01	CP., 0.1 $\mu$ F
Q542	48T62966F03	CP., DTA124EKA	C121	08S35374W01	CP., 0.1 $\mu$ F
Q802	48T65256W03	2SD2136	C122	08S82122F46	CP., 240pF
Q803	48T73888F12	CP., FMC2	C123	08S82122F29	CP., 47pF
<b>Diodes</b>			C124	08S35374W01	CP., 0.1 $\mu$ F
D101	48T25651W02	CP., MA152WK	C130	08S35374W01	CP., 0.1 $\mu$ F
D201	48T81063F01	CP., MA159			
D501	48T68828F11	1SS133			
D506	48T68828F11	1SS133			

Symbol No.	Part No.	Description	Symbol No.	Part No.	Description
C132	08T15399W03	CP., 0.047 $\mu$ F	E804	23S75372W06	ELY., 33 $\mu$ F / 16V
C133	08T15399W04	CP., 0.027 $\mu$ F	E808	23S75372W01	ELY., 330 $\mu$ F / 6.3V
C134	08T55487W02	CP., 0.22 $\mu$ F			
C135	08S35374W01	CP., 0.1 $\mu$ F			
C136	08S82122F37	CP., 100pF			
					(All resistors are chip 1/10W $\pm$ 5% unless otherwise noted.)
			<b>Resistors</b>		
C141	08T15399W04	CP., 0.027 $\mu$ F	R101	06S64995F78	11K ohm
C144	08T15399W04	CP., 0.027 $\mu$ F	R102	06S64996F10	220K ohm
C145	08T15399W03	CP., 0.047 $\mu$ F	R103	06S64996F11	240K ohm
C153	08S65128F58	CP., 1200pF	R104	06S64995F91	39K ohm
C191	08T15399W03	CP., 0.047 $\mu$ F	R105	06S64995F91	39K ohm
C201	08S82122F41	CP., 150pF	R106	06S64996F06	150K ohm
C202	08S82122F41	CP., 150pF	R107	06S64995F77	10K ohm
C205	08S82122F47	CP., 270pF	R108	—	Jumper
C206	08S82122F47	CP., 270pF	R109	06S64996F04	120K ohm
C207	08S82122F59	CP., 820pF	R110	06S64996F26	1M ohm
C208	08S82122F59	CP., 820pF	R111	06S64996F02	100K ohm
C233	08S82122F59	CP., 820pF	R112	06S64995F45	470 ohm
C234	08S82122F59	CP., 820pF	R113	06S64995F88	30K ohm
C501	08S82122F43	CP., 180pF	R114	06S64995F59	1.8K ohm
C502	08T15399W04	CP., 0.027 $\mu$ F	R115	06S64996F04	120K ohm
C503	08S35374W01	CP., 0.1 $\mu$ F	R116	06S64995F29	100 ohm
C504	08T15399W04	CP., 0.027 $\mu$ F	R117	06S64995F29	100 ohm
C507	08T15399W04	CP., 0.027 $\mu$ F	R118	06S64995F53	1K ohm
C513	08S82122F43	CP., 180pF	R120	—	Jumper
C522	08T15399W04	CP., 0.027 $\mu$ F	R121	06S64995F63	2.7K ohm
C540	08S82122F51	CP., 390pF	R122	06S64995F53	1K ohm
C801	08T15399W04	CP., 0.027 $\mu$ F	R123	06S64996F10	220K ohm
C805	08T15399W04	CP., 0.027 $\mu$ F	R124	06S64996F10	220K ohm
E101	23S75372W02	ELY., 100 $\mu$ F / 10V	R125	—	Jumper
E103	23S75372W15	ELY., 1 $\mu$ F / 50V	R126	06S64995F83	18K ohm
E104	23T74437F21	TAN., 10 $\mu$ F / 10V	R127	06S64995F77	10K ohm
E105	23T74437F32	TAN., 10 $\mu$ F / 16V	R130	06S64995F76	9.1K ohm
E106	23T74437F30	TAN., 4.7 $\mu$ F / 16V	R131	06S64996F01	91K ohm
E113	23S75372W03	ELY., 220 $\mu$ F / 10V	R132	—	Jumper
E130	23S75372W01	ELY., 330 $\mu$ F / 6.3V	R133	06S64995F78	11K ohm
E131	23S75372W12	ELY., 0.33 $\mu$ F / 50V	R134	06S64995F60	2K ohm
E132	23S75372W01	ELY., 330 $\mu$ F / 6.3V	R141	06S70072F13	22 ohm 1/4W
E201	23S75372W04	ELY., 10 $\mu$ F / 16V	R142	—	Jumper
E202	23S75372W04	ELY., 10 $\mu$ F / 16V	R143	06S64996F06	150K ohm
E203	23S75372W05	ELY., 22 $\mu$ F / 16V	R144	06S64995F43	390 ohm
E204	23S75372W05	ELY., 22 $\mu$ F / 16V	R145	06S64995F94	51K ohm
E205	23S75372W12	ELY., 0.33 $\mu$ F / 50V	R146	06S64995F89	33K ohm
E501	23S75372W13	ELY., 0.47 $\mu$ F / 50V	R147	06S64995F50	750 ohm
E502	23S75372W17	ELY., 3.3 $\mu$ F / 50V	R149	—	Jumper
E503	23S75372W04	ELY., 10 $\mu$ F / 16V	R152	06S64995F50	750 ohm
E504	23S75372W15	ELY., 1 $\mu$ F / 50V	R154	06S64995F85	22K ohm
E801	23T75427W01	ELY., 470 $\mu$ F / 16V	R155	06S64995F85	22K ohm
E802	23S75372W03	ELY., 220 $\mu$ F / 10V	R156	—	Jumper
E803	23S75372W06	ELY., 33 $\mu$ F / 16V			





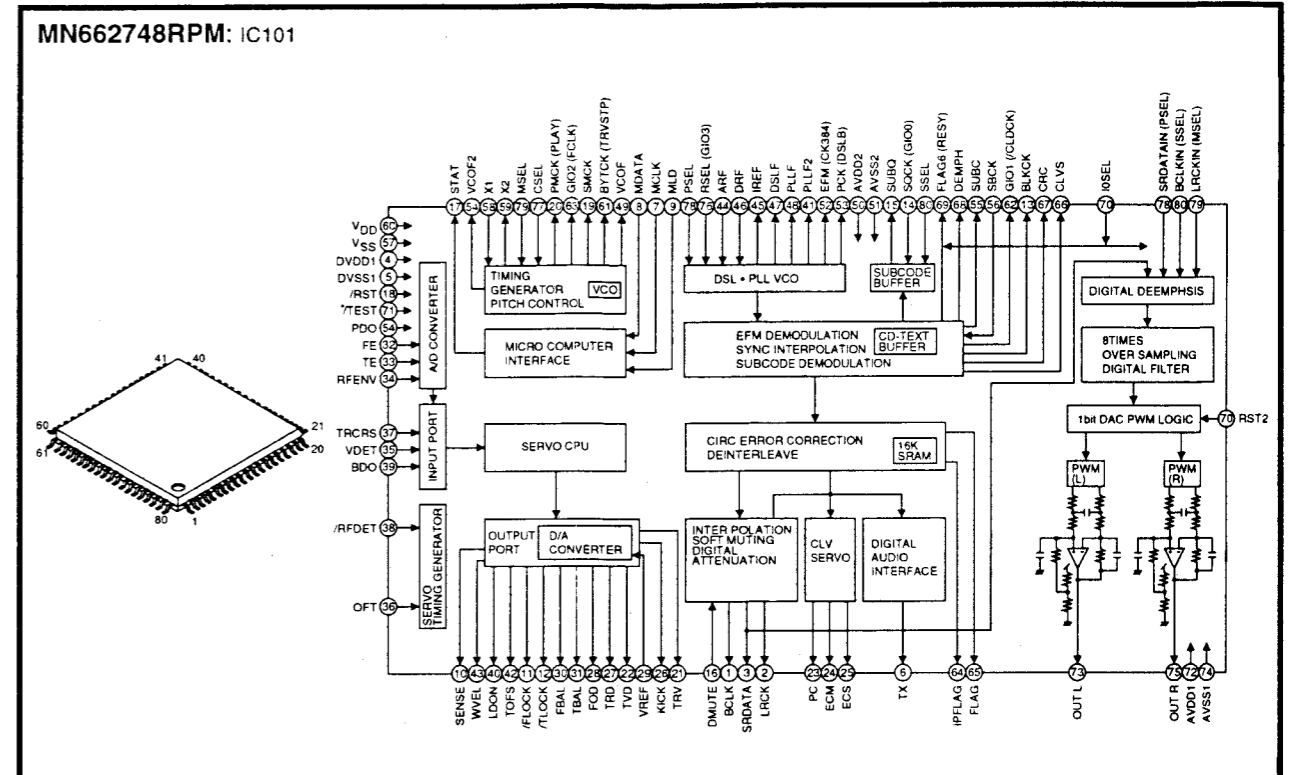
# Cabinet Assembly Parts List

Symbol No.	Index	Part No.	Description	Symbol No.	Index	Part No.	Description
1	5-B	13T25267Y02	Assy., Front Escutcheon				
4		03A61184W04	Screw, Bind (M2.6X5)				
5	2-B	64C60211W01	Assy., Plate Inner				
6		55A20491Y01	Key, Lock				
7	5-C	54B20712Y01	Card, Caution				
8		75C10781Y01	Damper, DT (D)				
9		07A61053W04	Assy., Bracket Spring				
10	3-D	03S38013W36	Screw, Bind (M2.6X4)				
11		03S94385F48	Screw, Pan Nylok (M2X4)				
15	3-C	03A38056W01	Screw, Special (M2.6X6)				
16	3-D	03A38056W02	Screw, Special (M2.6X6)				
18	3-F	30T65173W01	Wire, Flat				
19	3-D	14A20715Y01	Insulator, P.W.Board				

NOTE: Parts without part number are not supplied.

# Semi-Conductor Lead Identifications

NOTE : For the parts not mentioned, refer to the Schematic Diagram.

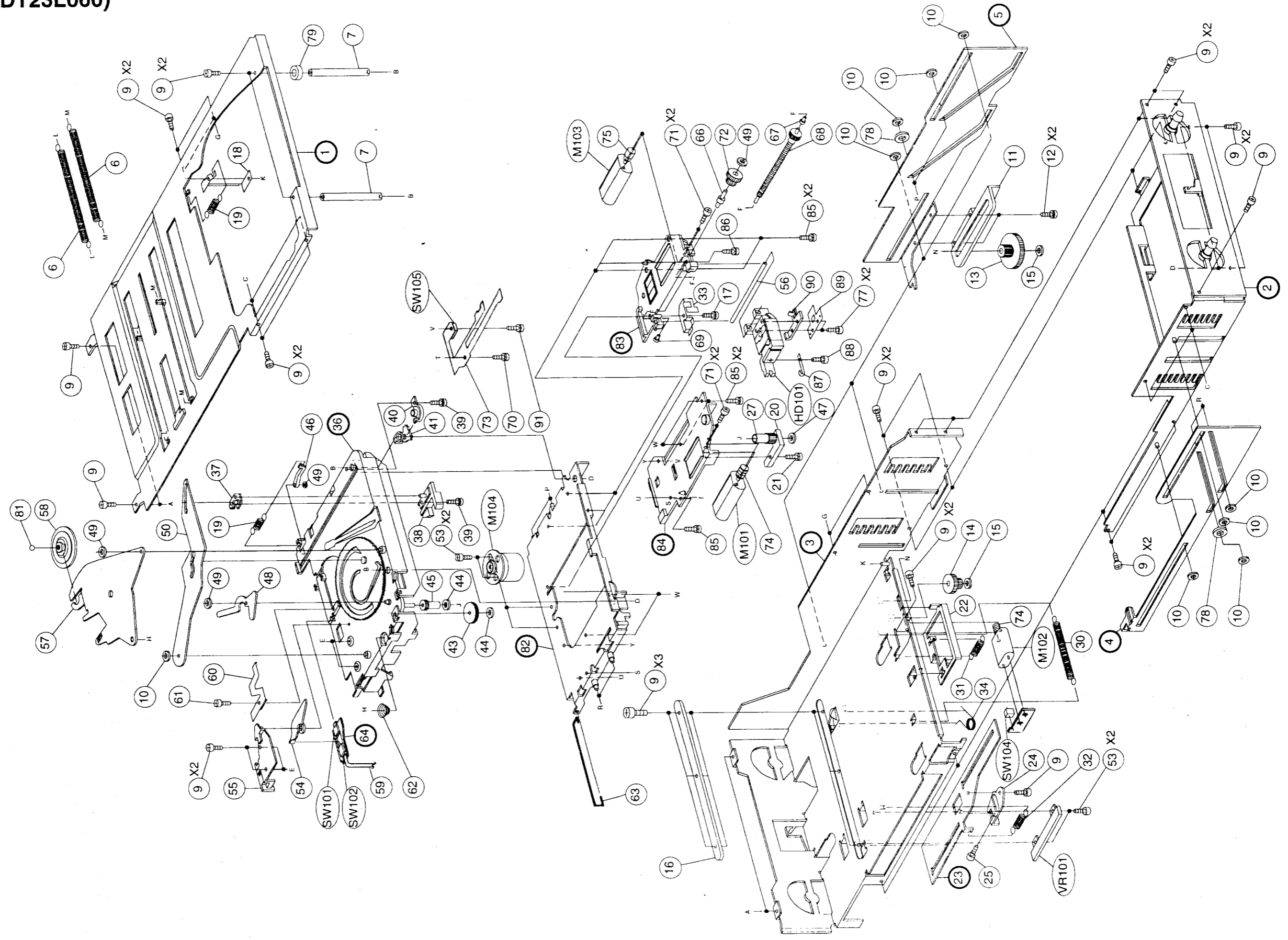


**25203Y01 : IC501**

PIN NO.	CODE ADDRESS	I/O	PIN NO.	CODE ADDRESS	I/O	PIN NO.	CODE ADDRESS	I/O	PIN NO.	CODE ADDRESS	I/O
1	NC	—	17	NC	—	33	A MUTE	O	49	DOSW	I
2	BUS OUT	O	18	GND	I	34	V CONT	O	50	ULDSW	I
3	NC	—	19	NC	—	35	RESET	I	51	LODSW	I
4	NC	—	20	NC	—	36	IRQ/BI	I	52	MAGSW	I
5	NC	—	21	NC	—	37	BATT	I	53	LMTSW	I
6	SCL	—	22	STAT	I	38	ACC	I	54	EJKEY	I
7	SDA	—	23	TLOCK	I	39	BLKCK	I	55	AVDD	—
8	NC	—	24	VSS	—	40	VDD	—	56	AVREF	—
9	VSS	—	25	FLOCK	I	41	X2	—	57	SUBQ	I
10	A0 (LT)	O	26	SENSE	I	42	X1	—	58	NC	—
11	A1 (CK)	O	27	NC	—	43	GND	—	59	SQCK	O
12	A2 (DT)	O	28	MLD	O	44	NC	—	60	NC	—
13	ELVM +	O	29	MDATA	O	45	GND	—	61	NC	—
14	ELVM -	O	30	MCLK	O	46	AVSS	—	62	NC	—
15	LODM +	O	31	XRST	O	47	LPS	I	63	NC	—
16	LODM -	O	32	D MUTE	O	48	TEMP	I	64	NC	—

# Exploded View (CD Mechanism) (DT23L060)

1  
2  
3  
4  
5  
A | B - 33 - | C | D | E | F - 34 - | G |



# CD Mechanism Assembly Parts List

NOTE: Parts without part number are not supplied.

Symbol No.	Index	Part No.	Description	Symbol No.	Index	Part No.	Description
6		41B51993W01	Spring, Extension	62	5-C	41A51995W01	Spring, Compression
7		47A51917W01	Shaft, Guide	63	5-D	41A51923W01	Spring, Rod
9		03S94385F19	Screw, Pan Nylok (M2X2.5)	66	2-E	46A60171W01	Stud, Middle
10		04B41345P22	Washer, Lock (M2.6)	67	2-E	43A60164W01	Bush, Screw (A)
11	2-F	44B51886W01	Rack, Elevator	68	2-E	01V61300W99	Assy., Shaft Screw
12	2-F	03S40014G07	Screw, W / Washer (M2X4)	69	3-E	43A60165W01	Bush, Screw (B)
13	2-F	44A60088W01	Gear, Rack	70	3-D	03S40014G62	Screw, W / Washer (M2X3)
14	3-F	44A60089W01	Gear, Wheel	71		03S94385F58	Screw, Pan Nylok (M2X3.5)
15		04B41345P24	Washer, Lock (M2.1)	72	2-E	44A60162W01	Gear, Middle
16	5-D	15A51889W01	Guide, Magazine	73	3-C	84T15533Y01	FPC Drive P.W.Board
17	2-E	03D40121T56	Screw, W / Double Washer (M2X4)	74		44A10811Y01	Worm, STD
18	2-B	45A51880W01	Stopper, Tray	75	2-D	44A60161W01	Gear, Motor
19		41B51993W02	Spring, Extension	77	2-E	03S94385F10	Screw, Pan Nylok (M2X4)
20	3-E	45A60160W01	Spacer, Bracket Motor	78		04B41345P05	Washer, Lock (M3.5)
21	3-E	03S40014G16	Screw, W/Washer (M2X14)	79	1-C	75A80830W01	Rubber, Sleeve
22	4-F	45A51874W01	Slide, Magazine Switch	81	3-A	43A70360W01	Steel, Ball
24	5-F	07A51882W01	Bracket, Sensor	85		03S40014G66	Screw, W/Washer (M2X3.5)
25	5-F	03S94385F11	Screw, Pan Nylok (M2X5.2)	86	2-E	03S40014G84	Screw, W/Washer (M2X6.5)
27	3-E	44A52035W01	Gear, Drive	87	3-E	41A11040Y01	Spring, Sled-HOE
30	4-F	41B51993W03	Spring, Extension	88	3-E	03S72235F81	Screw, Pan (M1.4X2)
31	4-F	41B51993W04	Spring, Extension	89	2-E	41A11099Y01	Spring, Nut (A)
32	5-G	41B51993W05	Spring, Extension	90	2-E	44A11101Y01	Spring, Nut (B)
33	2-E	07B91155W01	Stopper, Shaft (B)	91	3-D	03S40014G75	Screw, W/Washer (M2X9)
34	4-F	41A51996W01	Spring, Torsion				
37	3-B	01A51932W01	Assy., Riv. Bracket Push Pull				
38	3-C	45A51898W01	Arm, Push Pull				
39	3-C	03S40014G61	Screw, W / Washer (M2X5)				
40	3-C	15A51890W01	Guide, Chassis Tray				
41	3-C	07A51884W01	Bracket, Corner				
43	4-C	44A52036W01	Gear, Cam				
44	4-C	04B41345P15	Washer, Lock (M1.2)				
45	4-C	44A51896W01	Gear, Driven				
46	3-C	45A51894W01	Arm, Tray (A)				
47	3-E	04B41345P02	Washer, Lock (M1.7)				
48	4-B	01A51937W01	Assy., Riv. Lever Slide				
49		04B41345P12	Washer, Lock (M1.7)				
50	3-B	45A52034W01	Lever, Cam				
53		03S94385F01	Screw, Pan Nylok (M1.7X2.3)				
54	5-B	45A51887W01	Arm, Switch				
55	5-B	15B51891W01	Guide, Tray Side				
56	2-E	47A60169W01	Shaft, Pick-Up				
57	4-A	07B51879W01	Bracket, Clamper				
58	3-A	43A91063W01	Table, Clamper-D				
59	5-C	84T65057W01	FPC Switch P.W.Board				
60	4-B	41A91064W01	Spring, Clamper				
61	4-B	03S94385F07	Screw, Pan Nylok (M2X2)				

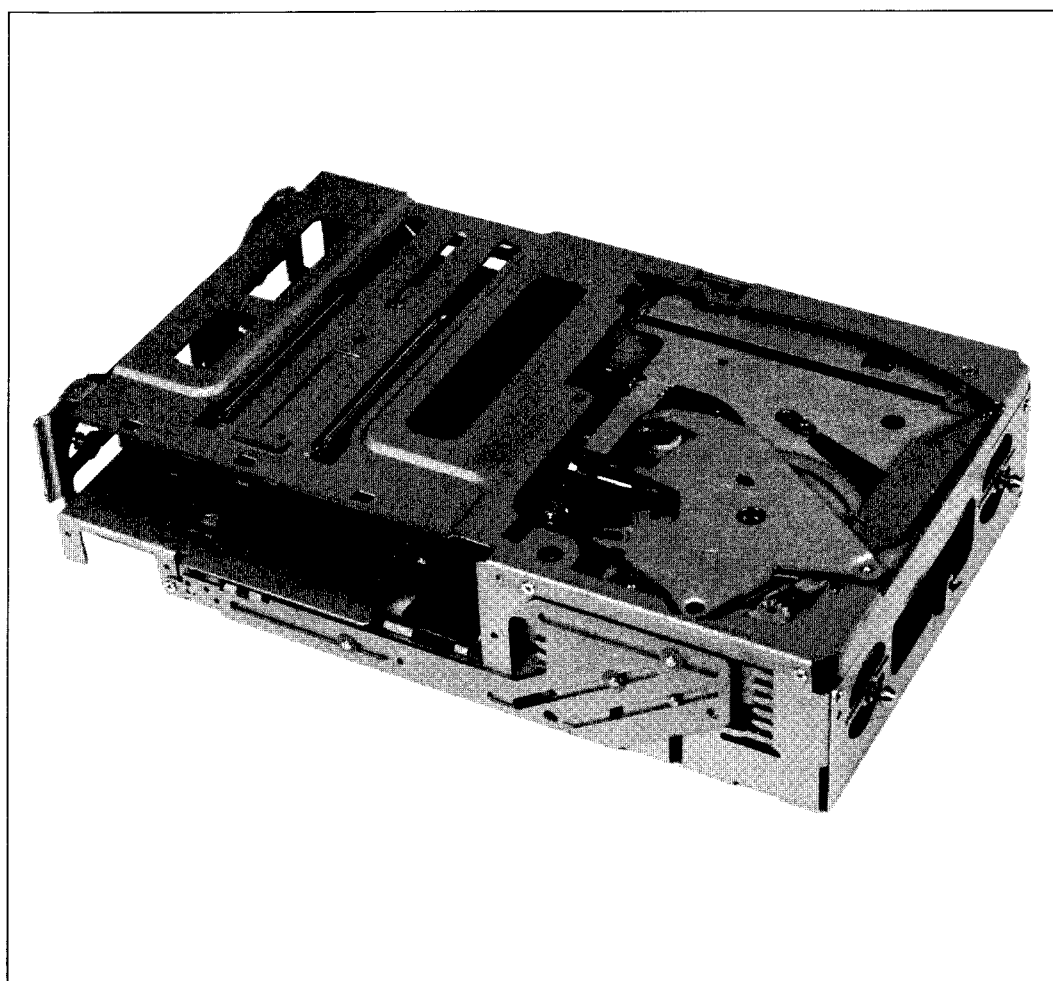
# **///ALPINE<sup>®</sup> SERVICE MANUAL**

---

## **CD Changer Mechanism**

### **CD Shuttle**

---



**DT SERIES**

---

## Contents

---

Disassembly Instructions .....	3 to 7
Mechanism Function Description .....	8 to 14
Timing Chart .....	15 to 20
Exploded View (CD Mechanism) .....	21 to 22
CD Mechanism Assembly Parts List .....	23

---

# Disassembly Instructions

## 1. Removal of Riv. Chassis Top Assembly

- (1) Remove the spring ① as shown in Figure 1.
- (2) Remove the screw ② as shown in Figure 1.

### 1. リベッティングシャーシトップ組立の外し方

- (1) 1本のバネ①を外します。(1図参照)
- (2) 1本のネジ②を外します。(1図参照)

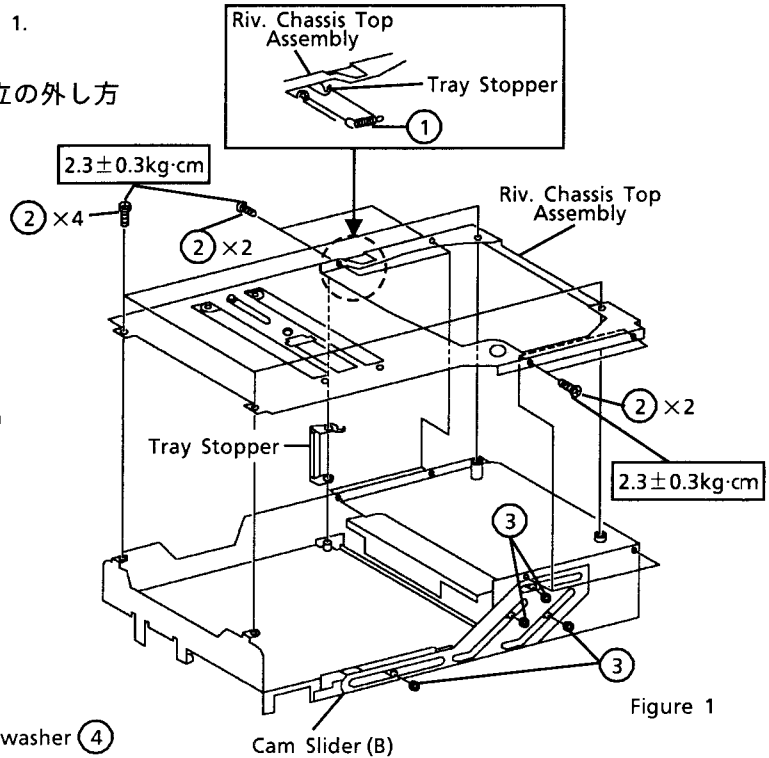


Figure 1

## 2. Removal of Cam Slider (B)

- (1) Remove the four washers ③ as shown in Figure 1.

### 2. カム スライダー(B)の外し方

- (1) 4個のワッシャー③を外します。

## 3. Removal of Cam Slider (A)

- (1) Remove the Rack Gear, by removing the washer ④ as shown in Figure 2.
- (2) Remove the Elevator Rack, by removing two screw ⑤ as shown in Figure 2.
- (3) Remove the four washer ⑥ as shown in Figure 2.

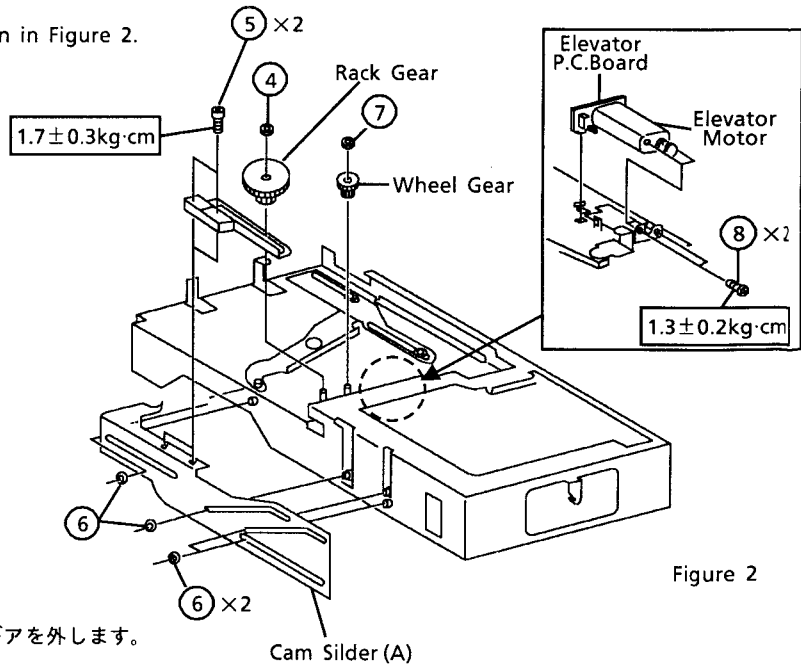


Figure 2

### 3. カム スライダー(A)の外し方

- (1) 1個のワッシャー④を外して、ラックギアを外します。(2図参照)
- (2) 2本のネジ⑤を外して、エレベーターラックを外します。(2図参照)
- (3) 4個のワッシャー⑥を外します。

#### 4. Removal of Elevator Motor

- (1) After removal of Elevator Rack, remove the Wheel Gear by removing the washer (7) as shown in Figure 2.
- (2) Remove the two screws (8) as shown in Figure 3.
- (3) Elevator Motor with the Elevator P.C.Board can be removed completely.

#### 4. エレベーターモーターの外し方

- (1) エレベーターラックを外した後、1個のワッシャー(7)を外して、ホイールギアを外します。(2図参照)
- (2) 2本のネジ(8)を外します。(3図参照)
- (3) 以上でエレベーターモーターはエレベーター基板が付いた状態で外れます。

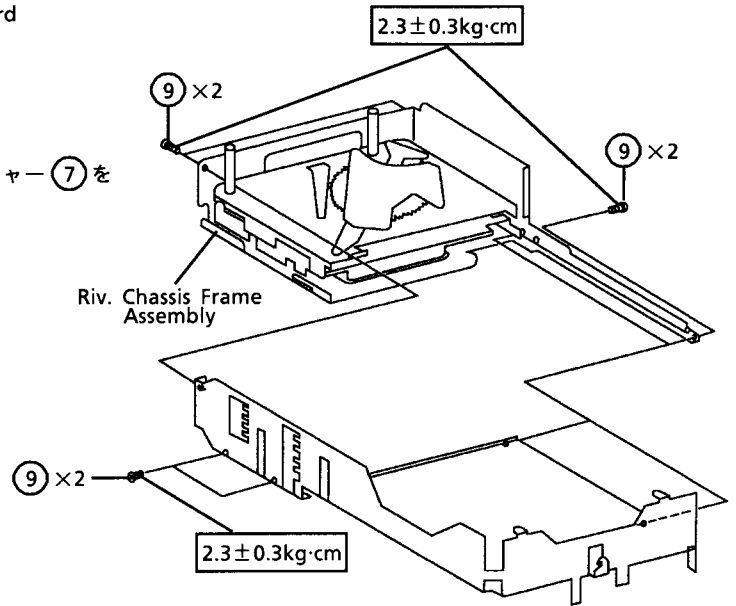


Figure 3

#### 5. Removal of Chassis Frame Assembly

- (1) Remove the six screws (9) as shown in Figure 3.

#### 5. シャーシ フレーム組立の外し方

- (1) 6本のネジ(9)を外します。(3図参照)

#### 6. Removal of Chassis Tray Assembly

- (1) Remove the two screws (10) as shown in Figure 4.

#### 6. シャーシ トレイ組立の外し方

- (1) 2本のネジ(10)を外します。(4図参照)

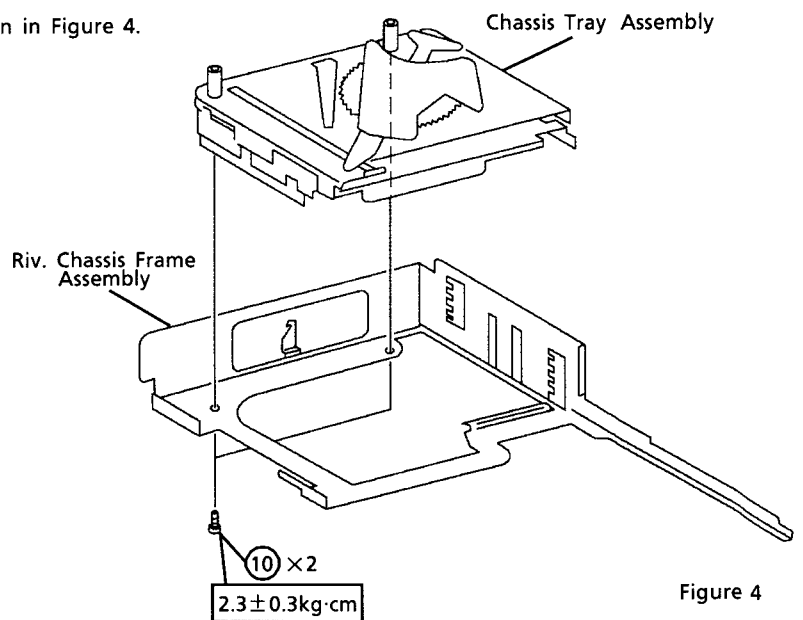


Figure 4

## 7. Removal of Drive Unit Assembly

- (1) Remove the Three solders (11) as shown in Figure 5.
- (2) Remove the Bracket Motor Assembly, by removing the screw (12) as shown in Figure 5.
- (3) remove the Rod Spring as shown in Figure 5.

## 7. ドライブユニット組立の外し方

- (1) 3箇所の半田(11)を外します。(5図参照)
- (2) 1本のネジ(12)を外して、ブラケットモーター組立を外します。(5図参照)
- (3) ロッドバネを外します。(5図参照)

## 8. Removal of Switch P.C.Board

- (1) Remove the three solders (13) as shown in Figure 6.
- (2) Remove the Switch Arm and Tray Side Guide, by removing the two screws (14) as shown in Figure 6.

## 8. スイッチ基板の外し方

- (1) 3箇所の半田(13)を外します。(6図参照)
- (2) 2本のネジ(14)を外して、アームスイッチとトレイサイドガイドを外します。(6図参照)

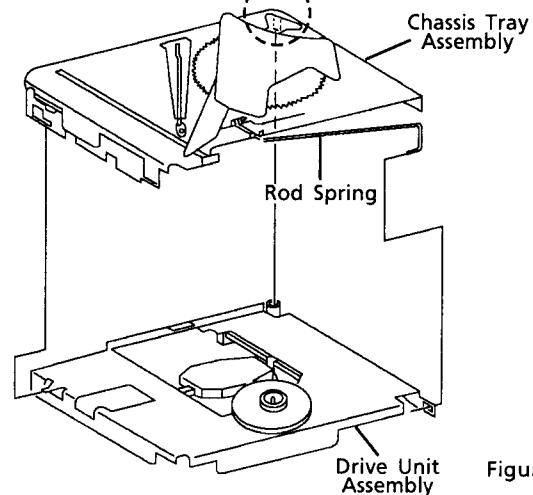
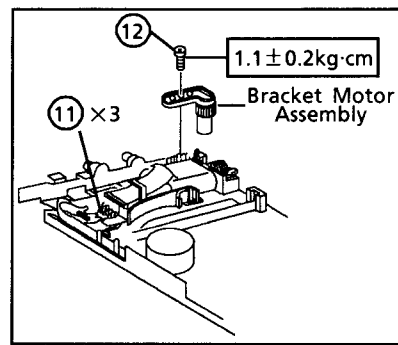


Figure 5

## 9. Removal of Sled Motor

- (1) Remove the two solders (15) as shown in Figure 7.
- (2) Remove the Middle Gear, by removing the washer (16) as shown in Figure 7.
- (3) Remove the two screws (17) as shown in Figure 7.

## 9. スレッドモーターの外し方

- (1) 2箇所の半田(15)を外します。(7図参照)
- (2) 1個のワッシャー(16)を外して、ミドルギアを外します。(7図参照)
- (3) 2本のネジ(17)を外します。(7図参照)

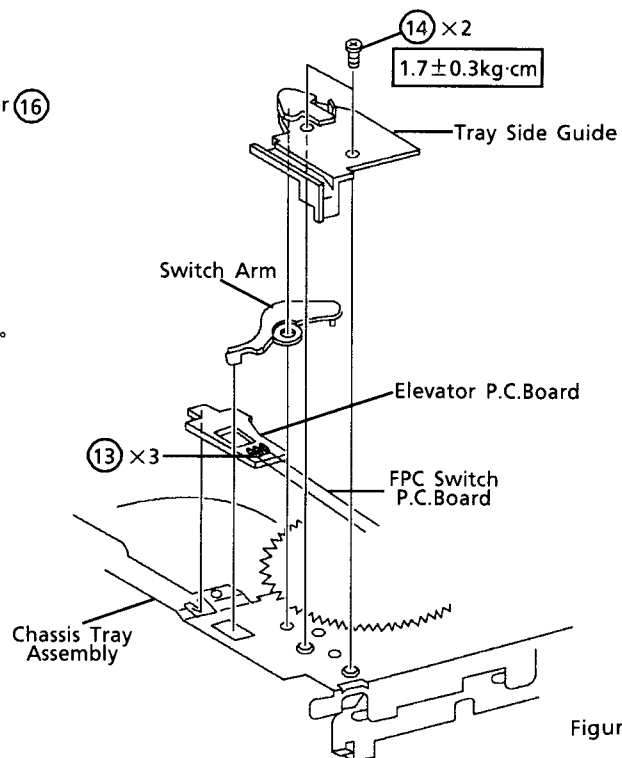


Figure 6

### 10. Removal of Loading Motor

- (1) Remove the two solders (18) as shown in Figure 7.
- (2) Remove the two screws (19) as shown in Figure 7.

### 10. ローディングモーターの外し方

- (1) 2箇所の半田 (18) を外します。(7図参照)
- (2) 2本のネジ (19) を外します。(7図参照)

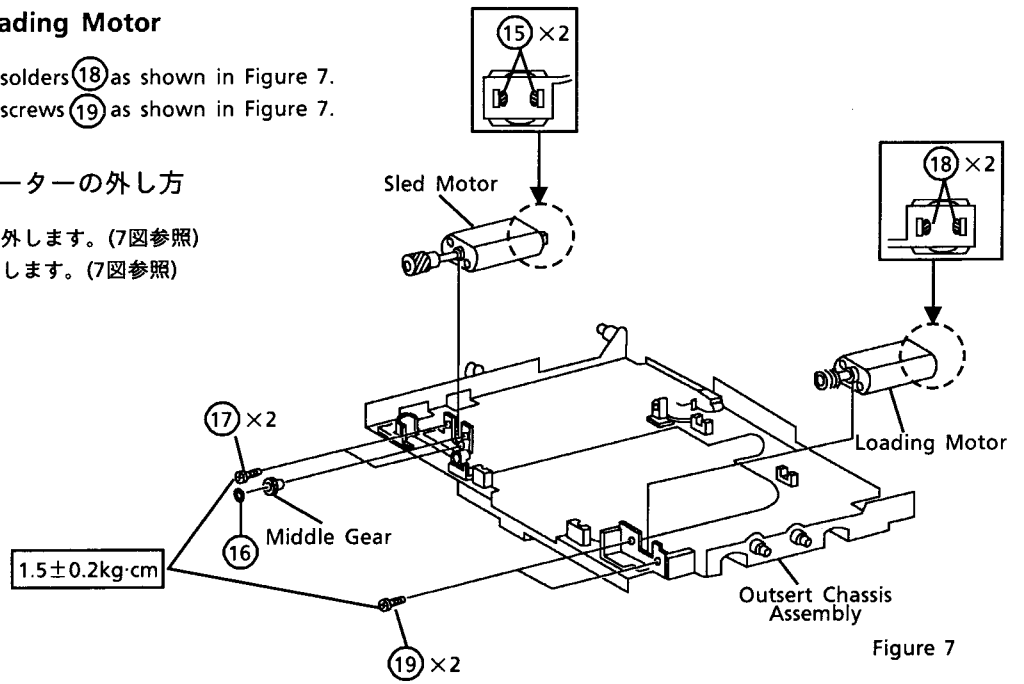


Figure 7

### 11. Removal of Pick Up Unit

- (1) Remove the four solders (20) as shown in Figure 9.
- (2) Remove the Shaft Stopper (A) / (B), by removing the two screws (21) as shown in Figure 8.
- (3) Remove the two Shafts as shown in Figure 8.

### 11. プックアップユニットの外し方

- (1) 4箇所の半田 (20) を外します。(9図参照)
- (2) 2本のネジ (21) を外して、シャフトストッパー(A) / (B)を外します。(8図参照)
- (3) 2本のシャフトを引き抜きます。(8図参照)

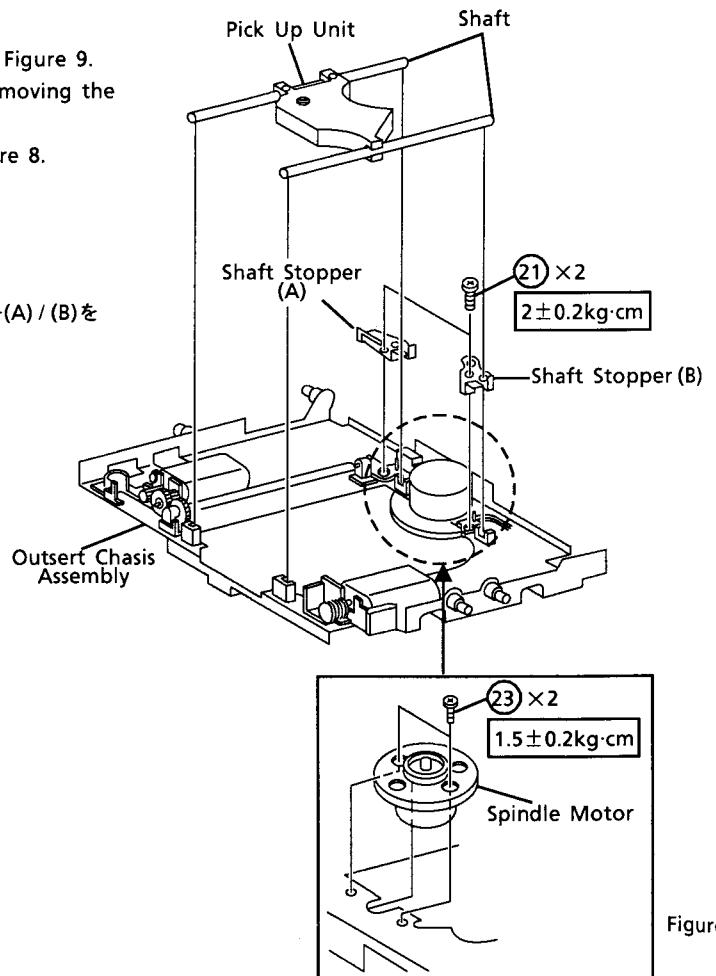


Figure 8

## 12. Removal of Spindle Motor

- (1) Disconnect the RED and BLK wires, by removing the two solders (22) as shown in Figure 9.
- (2) Remove two screws (23) as shown in Figure 8.

## 12. スピンドルモーターの外し方

- (1) 2箇所の半田(22)を外して、赤/黒のワイヤーを外します。(9図参照)
- (2) 2本のネジ(23)を外します。(8図参照)

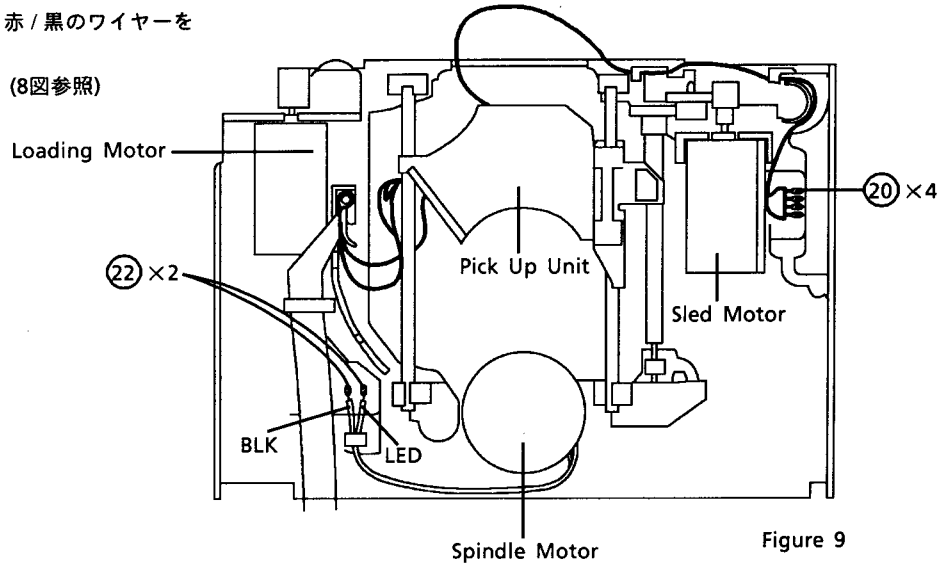


Figure 9

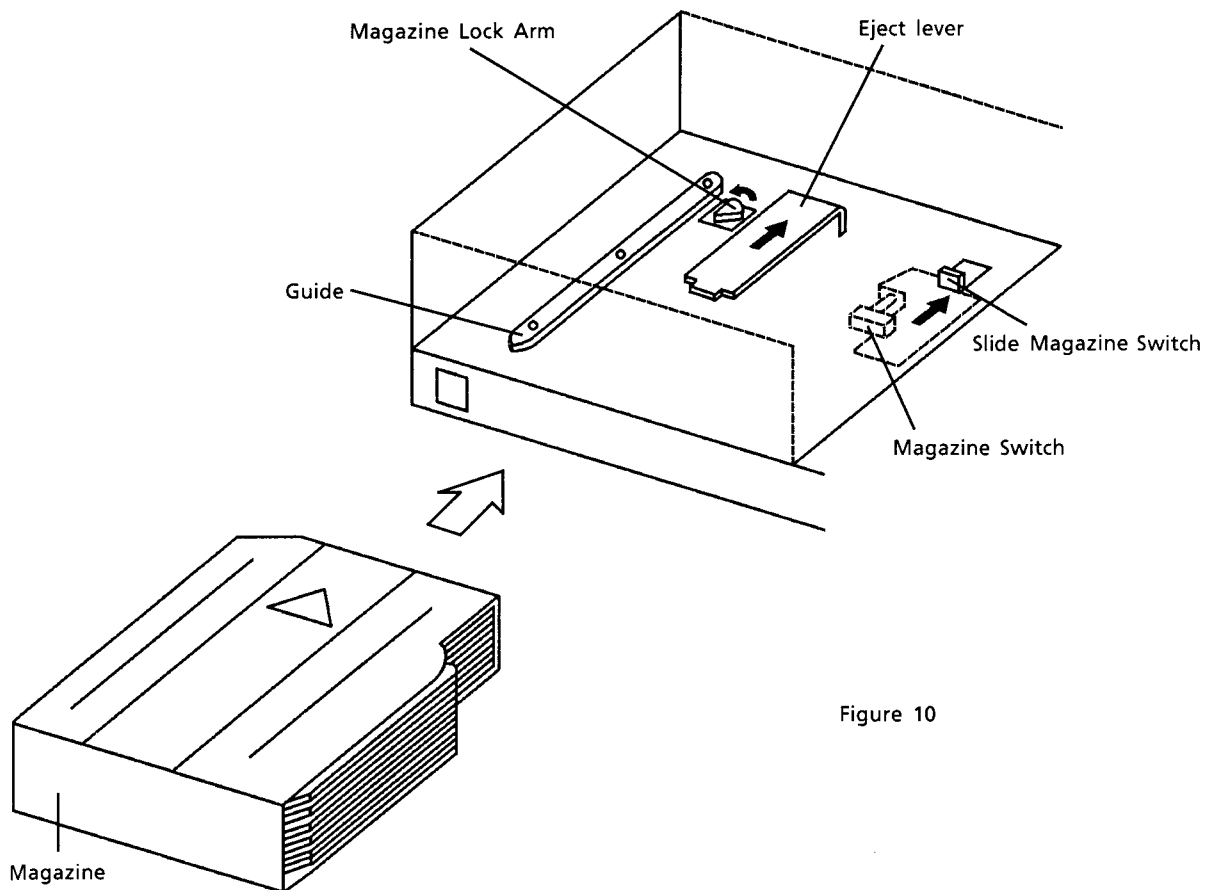
## Mechanism Function Description

### ● Magazine Insertion

Step	Description	Illustration
1	When a magazine is inserted, the eject lever is pushed in.	Figure 10
2	Further insertion of the magazine causes the magazine lock arm to move.	
3	The magazine lock arm causes the magazine to lock. At the same time the thrust magazine switch is pushed and the magazine switch is turned off. (Confirmation of the magazine lock.)	

### ● マガジン挿入

順序	動作説明	イラスト
1	マガジンを挿入するとイジェクト・レバーが押される。	10 図
2	更に挿入するとマガジン・ロック・アームが動く。	
3	マガジン・ロック・アームによりマガジンがロックされ、同時にスライド・マガジン・スイッチが押されマガジン・スイッチがOFFする。(マガジンがロックされたことの確認)	



## ● DISC Loading

Step	Description	Illustration
1	The elevator motor rotates.	Figure 11
2	The rotation is transmitted to gears (A), (B), (C), and (D).	
3	The rotation of the gear (D) moves the slider cam (A) in Y direction and the slider cam (B) in X direction. Then, the chassis tray and the drive unit move in Q direction along to edges of the cams.	
4	Motion of the bracket sensor in X, Y directions moves the position sensor volume, thereby controlling movement distances of the chassis tray and the drive unit.	
5	The chassis is stopped at the first disc position in the magazine. (This operation is the same for 2nd through 6th discs except the movement distance of the chassis is different.)	
6	The loading motor rotates. (The loading motor can rotate in forward and reverse directions.)	
7	The rotation is transmitted to gears (E), (F), (G) and (H).	
8	The rotation of the gear (H) moves the arm push-pull in Y direction through the lever cam and takes out the tray from the magazine.	
9	In the same way as in the step (8), the rotation of gear (H) moves the slider lock claw at side of the chassis tray through the lower slider lock and engages it with the slit provided on the chassis frame, thus locking the chassis tray.	
10	In the same way as in the step (9), the rotation of gear (H) turns on the switch A through the arm switch. (Confirmation of the tray pulled into the chassis tray.)	
11	Steps 1 - 4 (step 3 for only the drive unit) are repeated again to bring the drive unit in the disc play position and then the disc is clamped by pressing the disc to the clamper.	

## ● DISC ローディング

順序	動作説明	イラスト
1	エレベーター・モーターが回転する。	11 図
2	ギア (A), (B), (C), (D) と動力が伝達する。	
3	ギア (D) の動力によりスライダークカム (A) がY方向、スライダークカム (B) がX方向に動き、カムのプロフィールに沿ってシャーシトレイ及びドライブユニットがQ方向に動く。	
4	ブラケット・センサーがX, Y方向に動くことによって、ポジションセンサー・ボリュームを動かし、シャーシトレイ及びドライブユニットの移動距離を制御する。	
5	マガジンの1枚目のトレイ位置にシャーシトレイを止める。(2~6枚目のトレイはシャーシトレイ停止位置が異なるだけで、動作は同様)	
6	ローディング・モーターが回転する。(正逆転可能)	
7	ギア (E), (F), (G), (H) と回転が伝達する。	

順序	動作説明	イラスト
8	ギア (H) の回転動力によりレバー・カムを介し、アーム・プッシュプルをY方向に動かし、マガジンからトレイを引き出す。	11 図
9	項目8と同時に、ギア (H) の回転動力により、レバー・スライダロックを介し、シャーシトレイの側面にあるスライダロックの爪が動きシャーシ・フレームのスリット穴と吻合され、シャーシ・トレイがロックされる。	
10	項目9と同時に、ギア (H) の回転動力により、アーム・スイッチを介し、スイッチ (A) がONする。(トレイがシャーシトレイに引き込まれたことの確認)	
11	再び項目1~4の動作(項目3はドライブ・ユニットのみ)を行い、DISCプレイ位置にドライブ・ユニットを動かすことによって、DISCをクランプに押しつけてDISCをクランプする。	

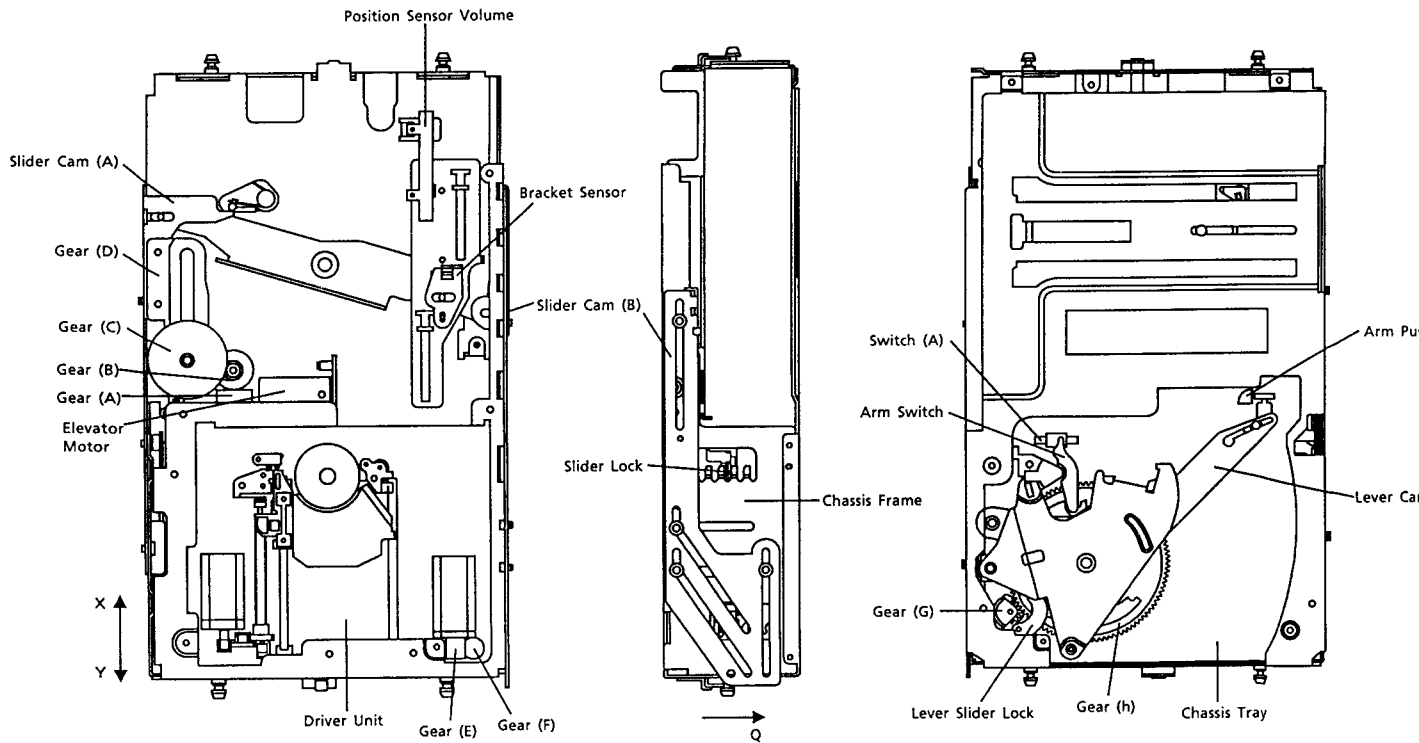


Figure 11

● Play

Step	Description	Illustration
1	The spindle motor rotates.	Figure 12
2	The rotation of the sled motor is transmitted through the gears to the feed screw and moves the pickup.	
3	The lead-in position of the disc is detected by the inner limit position switch and the reading of the disc data begins.	

● プレイ

順序	動作説明	イラスト
1	スピンドル・モーターが回転する。	12 図
2	スレッド・モーターの回転がギア (I), (J) を介して送りスクリューに伝えられ、ピックアップを移動させる。	
3	内周リミットスイッチにより、DISCのリードイン位置を検知し、DISCの情報を読み始める。	

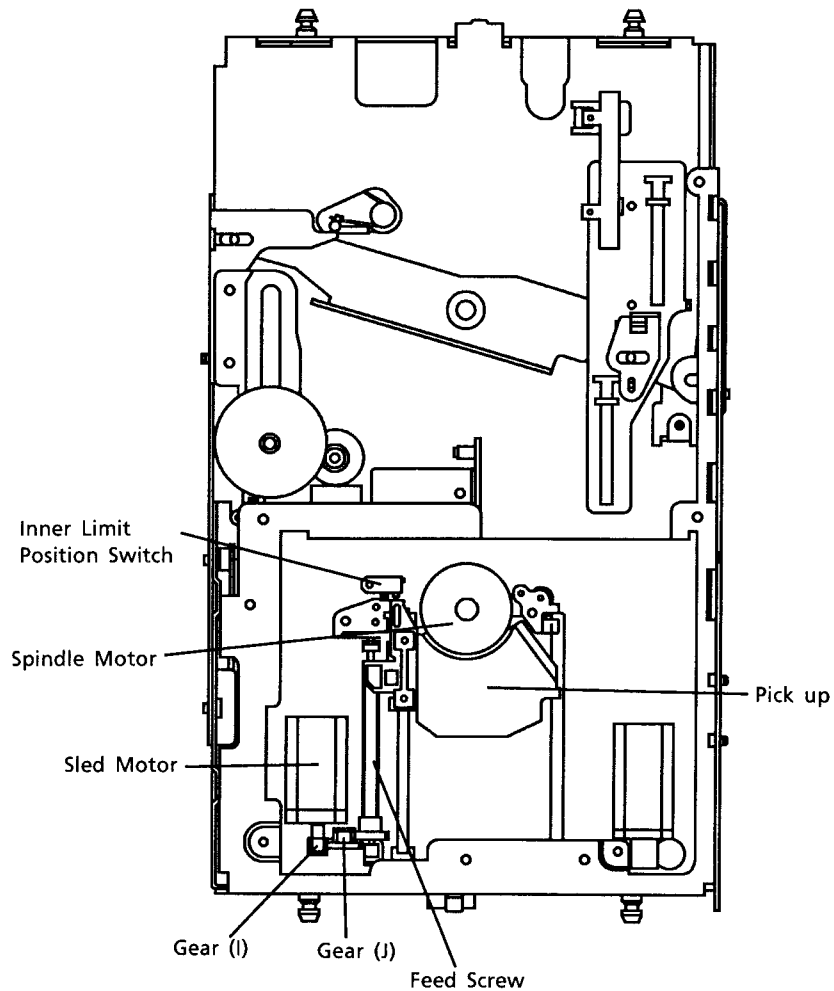


Figure 12

## ● Disc Unloading

Step	Description	Illustration
1	The elevator motor rotates.	Figure 13
2	The rotation of the motor is transmitted to gears (A), (B), (C), and (D).	
3	The rotation of the gear (D) moves the slider cam (A) in X direction and the slider cam (B) in Y direction, and the drive unit moves along to the edges of the cams, thereby releasing the disc clamp.	
4	The loading motor rotates.	
5	The rotation of the motor is transmitted to gears (E), (F), (G), and (H).	
6	The rotation of gear (H) is transmitted to the arm push-pull through the lever cam and this moves the arm push-pull in X direction, thereby housing the tray into the magazine.	
7	In the same way as in step (6), the rotation of the gear (H) moves the slider lock through the lever slider lock and releases the lock of the chassis tray.	
8	In the same way as in step (7), the rotation of the gear (H) turns on the switch (B) through the arm switch. (Confirmation of the tray housed in the magazine.)	

## ● DISC アンローディング

順序	動作説明	イラスト
1	エレベーター・モーターが回転する。	13 図
2	ギア(A), (B), (C), (D)と動力が伝達する。	
3	ギア(D)の動力により、スライダークム(A)がX方向、スライダークム(B)がY方向に動き、カムのプロフィールに沿ってドライブ・ユニットがP方向に動きDISCクランプを解除する。	
4	ローディング・モーターが回転する。	
5	ギア(E), (F), (G), (H)と回転が伝達する。	
6	ギア(H)の回転動力によりレバーカムを介し、アーム・プッシュプルをX方向に動かし、トレイをマガジンに収納する。	
7	項目6と同時に、ギア(H)の回転動力により、レバー・スライダークロックを介し、スライダークロックを動かし、シャーシ・トレイのロックを解除する。	
8	項目7と同時に、ギア(H)の回転動力により、アーム・スイッチを介し、スイッチ(B)がONする。(トレイが、マガジンに収納されたことの確認)	

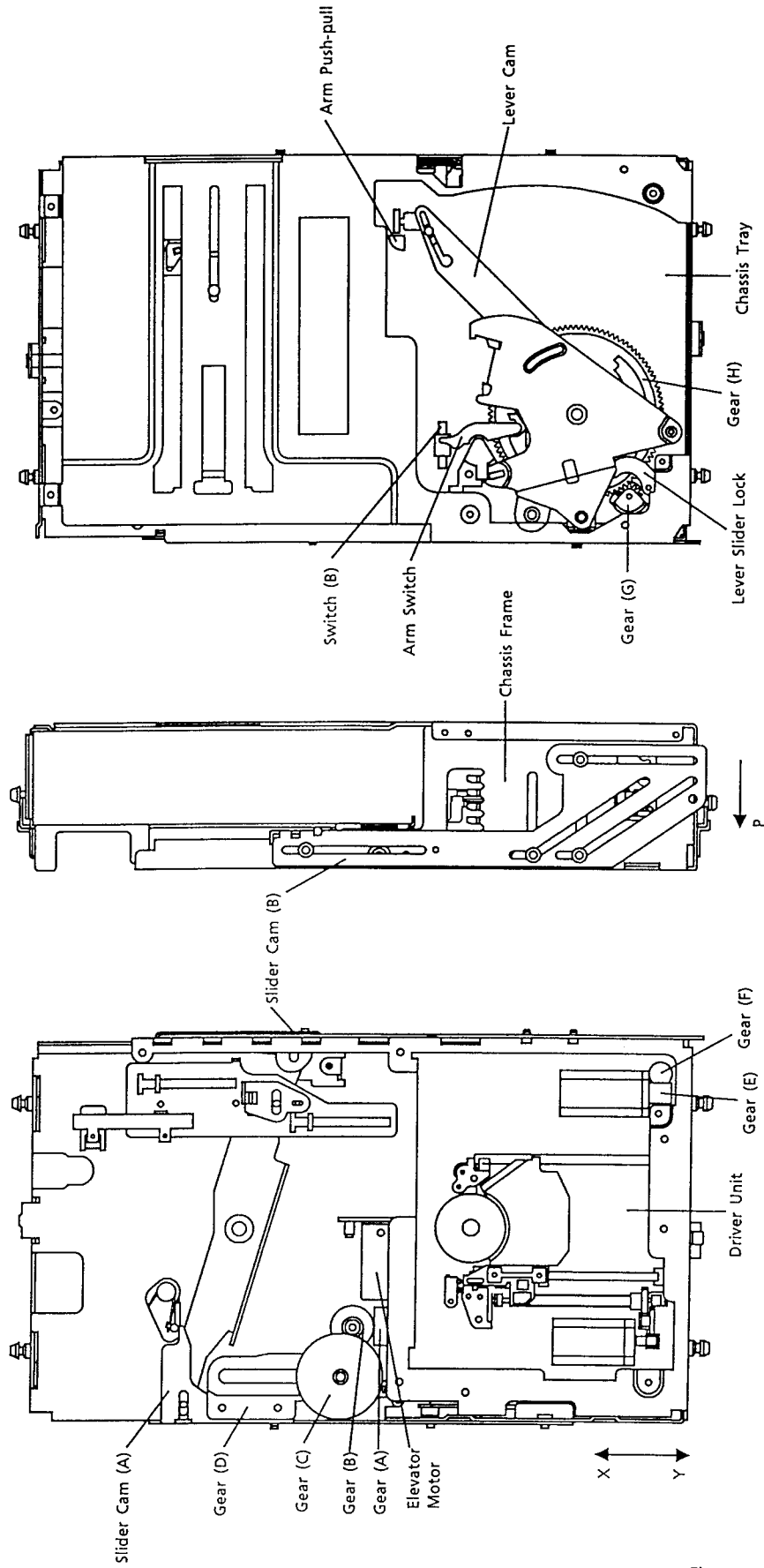


Figure 13

● Magazine Eject

Step	Description	Illustration
1	The elevator motor rotates.	Figure 14
2	The rotation is transmitted to gears (A), (B), (C), and (D).	
3	The rotation of the gear (D) moves the slider cam (A) in X direction, and pushes the magazine lock arm, thereby releasing the magazine lock.	
4	The force of the spring moves the eject lever in R direction and this ejects the magazine and turns on the magazine switch. (Confirmation of the magazine ejected.)	

● DISC イジェクト

順序	動作説明	イラスト
1	エレベーター・モーターが回転する。	14 図
2	ギア(A), (B), (C), (D)と動力が伝達する。	
3	ギア(D)の動力により、スライダークカム(A)がX方向に動きマガジン・ロック・アームを押し、マガジン・ロックが解除される。	
4	イジェクト・レバーがバネの力によりR方向に動きマガジンが排出され、マガジン・スイッチがONする。(マガジンを排出したことの確認)	

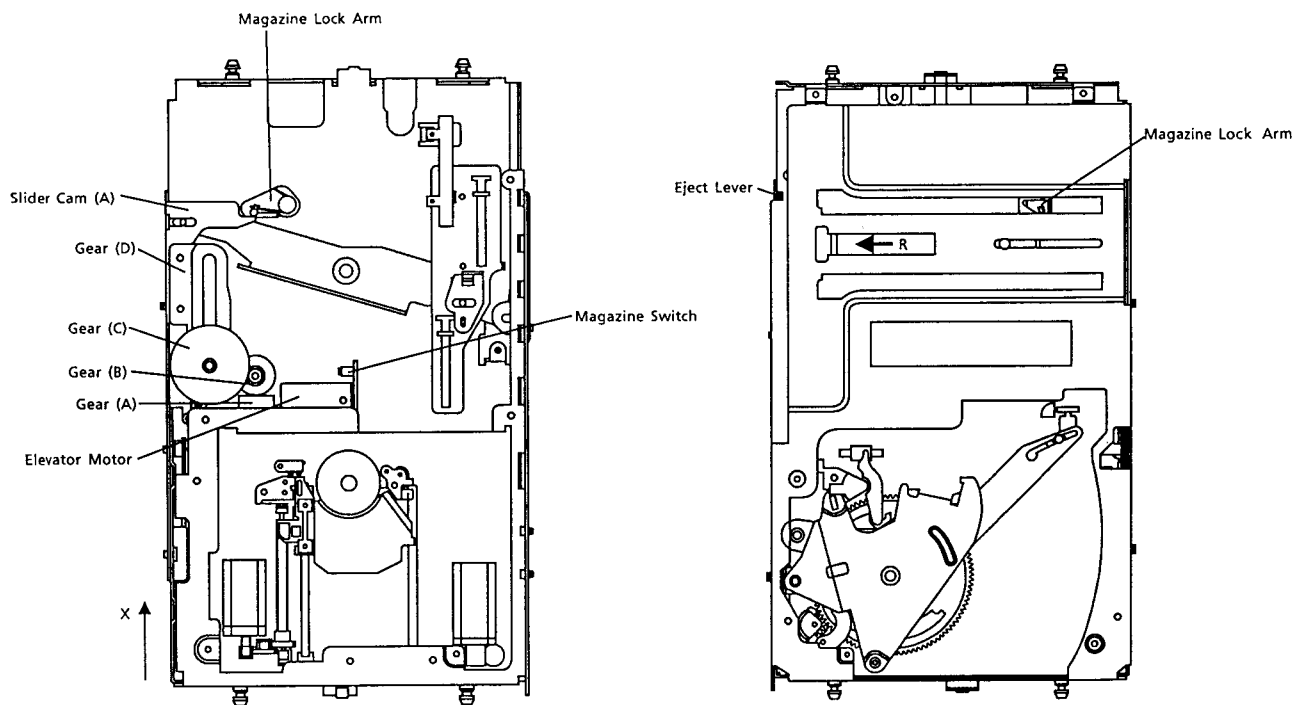


Figure 14

# Timing Chart

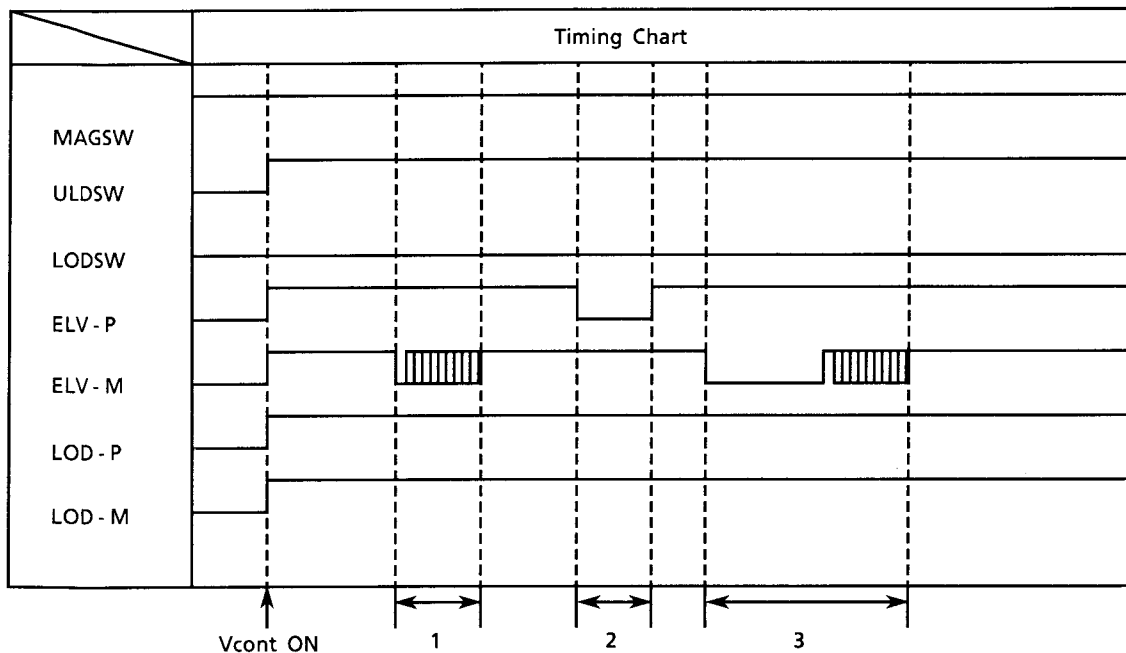
## ● Initialization (イニシャライズ動作)

Carried out when the unit is reset.

1. A blank eject operation is carried out when a magazine is not installed.
2. If the tray is pulled in (LODSW=L), one of two operations shown below is carried out.
  - a. If the address is remembered in the EEPROM, nothing is carried out with the current conditions maintained.
  - b. If the EEPROM does not exist, the address is identified by making a forced chucking.

### リセットがかかった時に行う動作

1. マガジンなしの場合は、空イジェクト動作をする。
2. トレイを引き込んでいる場合 (LODSW=L) は、次の2つの場合がある。
  - a. EEPROM で番地を覚えている場合は、そのまま何もしない。
  - b. EEPROM がない場合は、強制チャッキングで番地を判断する。



### Process contents

1	Forced chucking	When ULDSW is H and LODSW is L, the unit is in loading status, but chucking status is not judged with LPS only. So, forced chucking is carried out by moving the elevator upward with pulse signal for 3 seconds.
2	Releasing	Releases the chucking by moving the elevator downward. Microcomputer confirms a value of the linear position sensor and judges the disc position.
3	Chucking	As MAGSW is H, the mechanism chucks a disc, reads TOC, stops, and then waits commands from bus.
		* Condition to carry out the forced chucking : Unit without EEPROM is reset.

処理内容

1	強制 チャッキング	ULDSWがHでLODSWがLのときは、ローディングされている状態だが、チャッキングされているか否かは、LPSだけでは判断できない為、エレベーターを上方に3秒間パルス送りして強制的にチャッキングさせる。
2	リリース	エレベータを下方に移動させ、リリース(チャッキングを外す) μ-COMがリニアポジションセンサーの値を確認して、何枚目のポジションであるかを判断する。
3	チャッキング	MAGSWがHである為、ディスクをチャッキングしてTOCを読みSTOPしてからバスのコマンドを待つ。
		* 強制チャッキングを行う条件としては： EEPROMがなくてRESETがかかった場合。

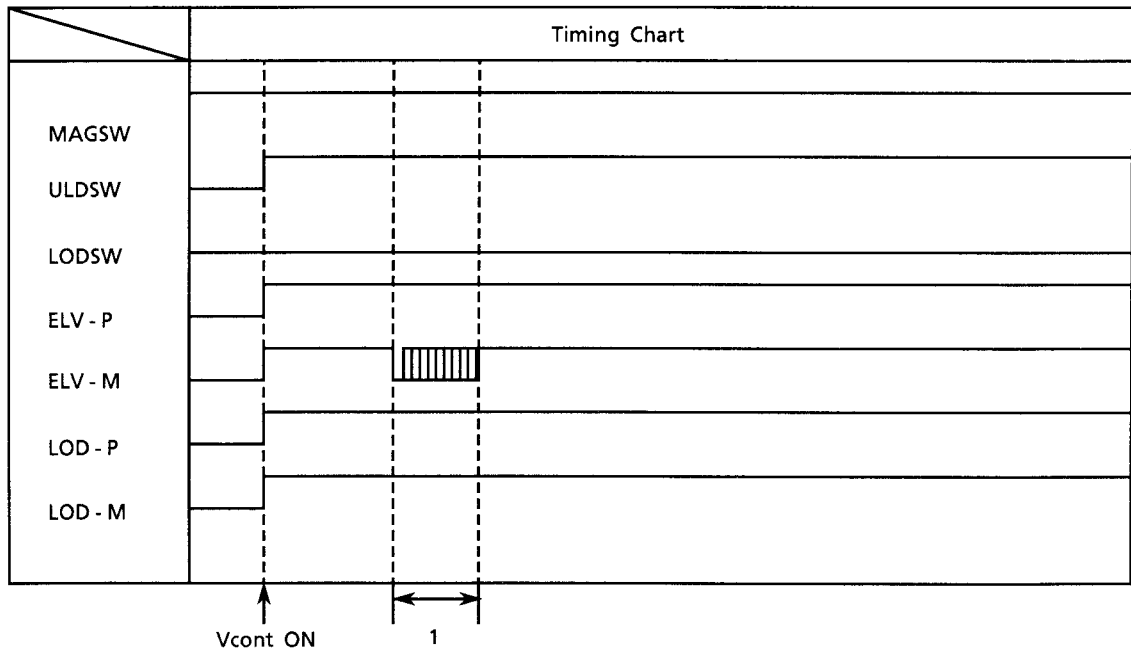
● Pressing operation (押し付け動作)

Pressing operation is carried out to perform precise chucking.

1. This operation is carried out when an operation mode is changed from Tape / Tuner to CD with the ACC / Power on after the reset.

正確にチャッキングするように押し付ける動作

1. リセット後にACC / POWERのONし、テープ / チューナーからCDになった時に行う。



Process contents

1	Pressing operation	As ULDSW is H and LODSW is L, a disc loaded is confirmed and the elevator is moved with pulse signal.
		* Pressing operation is an operation to remove a loosening.

処理内容

1	押し付け動作	ULDSWがH、LODSWがLであるためディスクがローディングされてることを確認して、エレベータをパルス送りにて移動させる。
		* 押し付け動作とは、緩みを取る為に行う動作をいう。

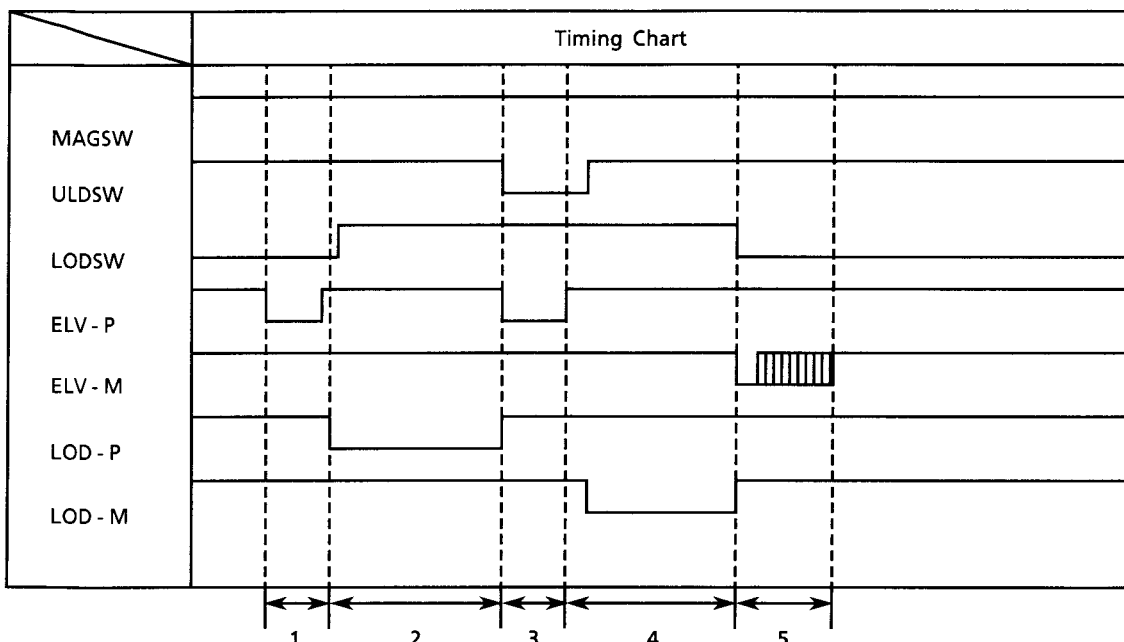
● Disc change operation (Example in downward operation)  
 (ディスクチェンジ動作 (下向きの場合))

Disc change operation from Mth disc to Nth disc.

1. Mth disc is released (MP→MT), unloading is carried out, and the elevator is moved (MT→NT), and then the loading and chucking operations are carried out (NT→MT).

M枚目からN枚目にDISCチェンジをする動作

1. M枚目をリリース (MP→MT) し、アンロードを行いエレベータを移動 (MT→NT) させローディング、チャッキング (NT→NP) する。



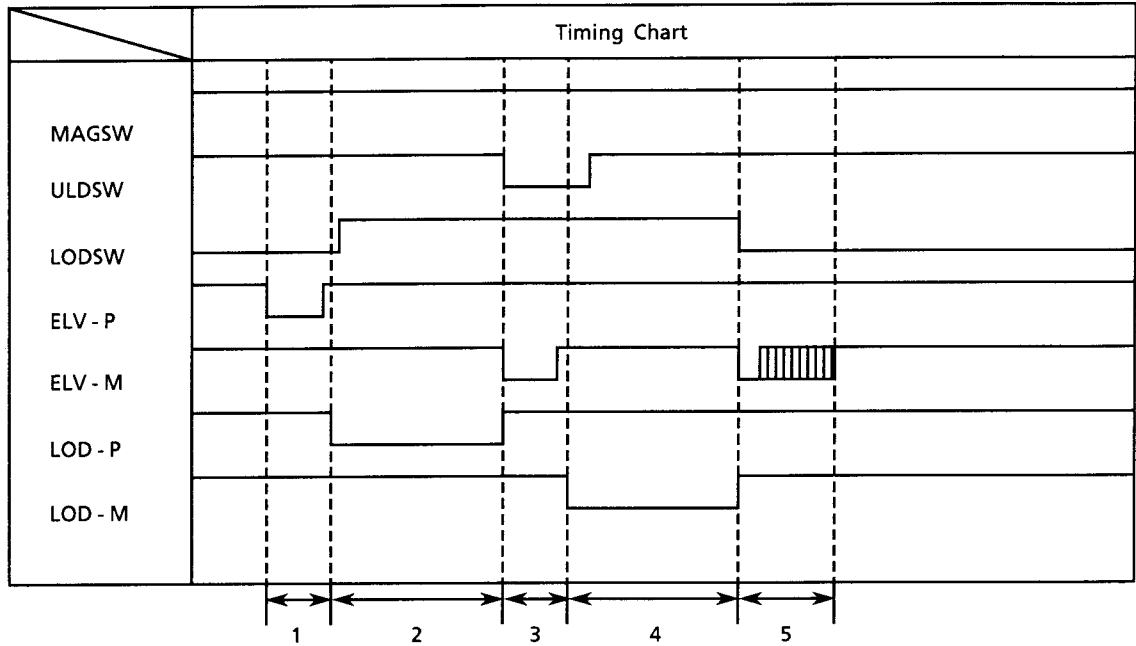
Process contents

1	Releasing	Moves the elevator downward and releases the chucking.
2	Unloading	Returns the disc to the tray. In this case, the operation completes at a falling edge of ULDSW [H→L (OFF→ON)].
3	Elevator downward	Moves the elevator downward and stops it when it reaches a predetermined pull-in position.
4	Loading	Pulls out the tray from the magazine. This operation completes when LODSW goes L (ON).
5	Chucking	Moves the elevator upward and chucks a disc. In this case, a final pulse is fed to make the chucking securely.

処理内容

1	リリース	エレベータを下方に移動させチャッキングを外す。
2	アンロード	ディスクをトレイに戻す。この時ULDSWの立ち下がり[H→L (OFF→ON)]をもって動作終了となる。
3	エレベータ下向き	エレベータを下方に移動させ、目的の引き込み位置まで移動した時点でSTOPする。
4	ローディング	マガジンよりトレイを引き出す。LODSWがL (ON) になった時点で動作終了となる。
5	チャッキング	エレベータを上方に移動させ、チャッキングする。この際、最後にパルス送りで確実にチャッキングさせる。

● Disc change operation (Upward) (ディスクチェンジ動作 (上向きの例))



Process contents

1	Releasing	Moved the elevator downward and releases the chucking.
2	Unloading	Returns the disc to the tray. In this case, the operation completes at the falling edge of ULDSW [H→L (OFF→ON)].
3	Elevator downward	Moves the elevator upward and stops it when it reaches a predetermined pull-in position.
4	Loading	Takes out the tray from the magazine. Completes the operation when LODSW goes L (ON).
5	Chucking	Moves the elevator upward and chucks a disc. In this case, a final pulse is fed to make the chucking securely.

処理内容

1	リリース	エレベータを下方に移動させチャッキングを外す。
2	アンロード	ディスクをトレイに戻す。この時ULDSWの立ち下がり[H→L (OFF→ON)]をもって動作終了となる。
3	エレベータ下向き	エレベータを上方に移動させ、目的の引き込み位置まで移動した時点でSTOPする。
4	ローディング	マガジンよりトレイを引き出す。LODSWがL (ON) になった時点で動作終了となる。
5	チャッキング	エレベータを上方に移動させ、チャッキングする。この際、最後にパルス送りで確実にチャッキングさせる。

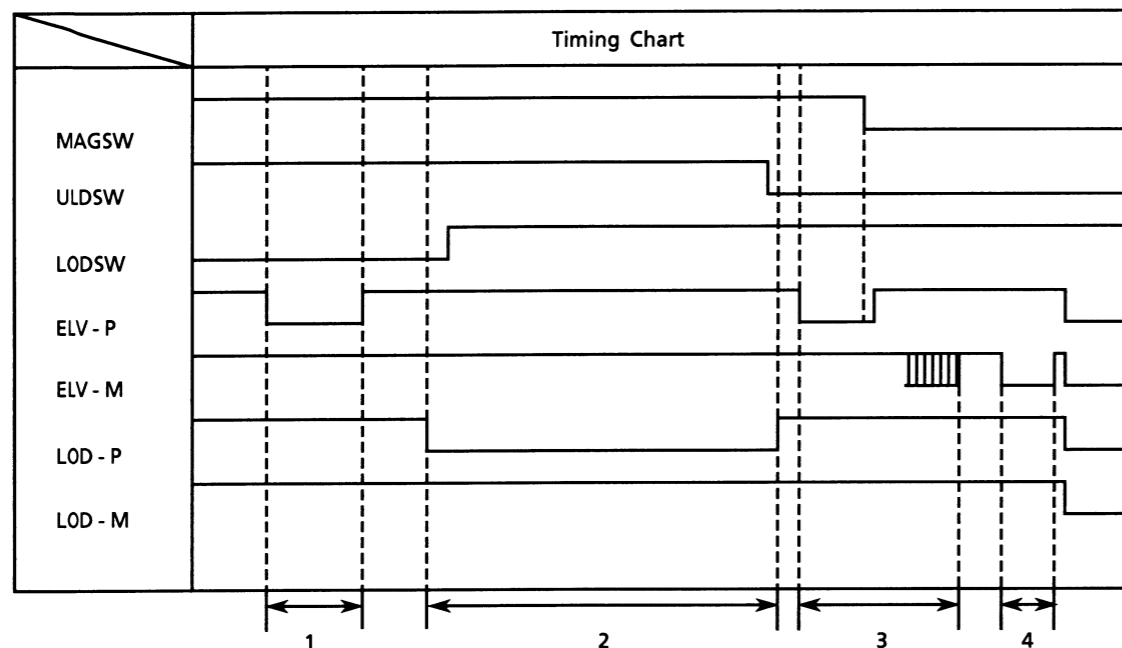
● Eject operation (イジェクト動作)

Operation to reject the magazine

1. Releases Mth disc (MP→MT), performs unloading, moves the elevator (MT→E) to release the lock, moves the elevator (E→2T), and then enters the standby condition.

マガジンをイジェクトする動作

1. M枚目をリリース (MP→MT)し、アンロード後エレベータを移動 (MT→E) してロックを外し、エレベータを移動 (E→2T) して待機状態になる。



Process contents

1	Releasing	Moved the elevator downward and releases the chucking.
2	Unloading	With ULDSW=H, LODSW=L the tray is in a loading status, so unloading operation is carried out. When ULDSW changes from H to L, LODM is stopped.
3	Eject	Moves the elevator downward and lowers it up to the eject position. Releases the magazine lock and confirms MAGSW. In this case, if MAGSW=L, the elevator is moved up to 1T position with a pulse signal.
4	Elevator shift	The elevator is moved to 1t position, and then moved to 2T position, and then eject operation completes. (Standby status)

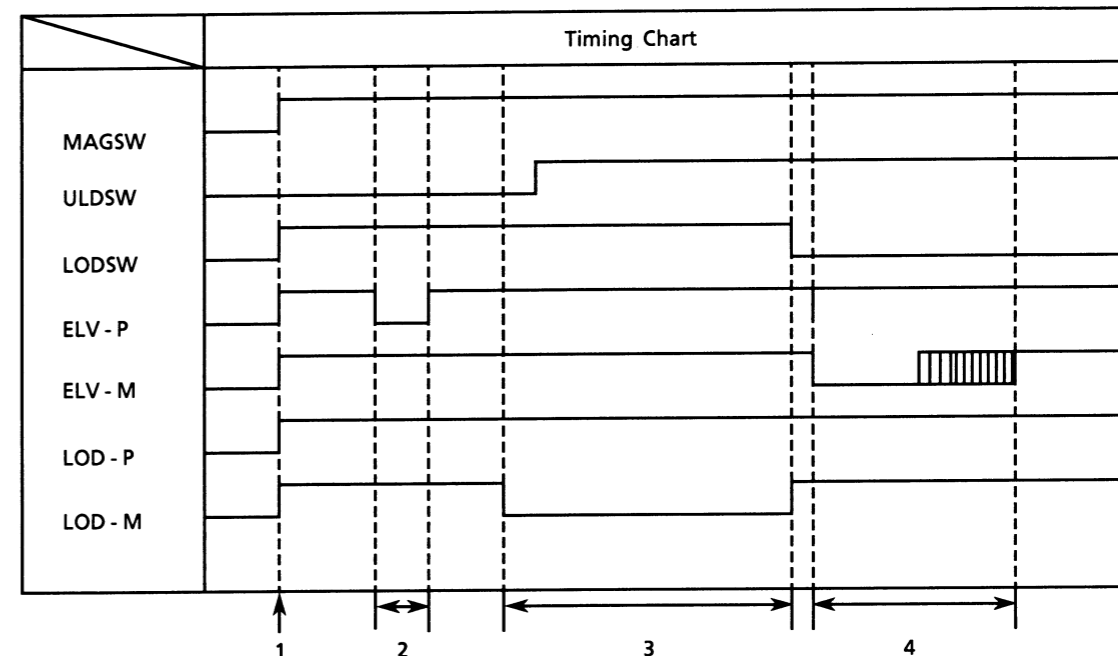
処理内容

1	リリース	エレベータを下方に移動させチャッキングを外す。
2	アンロード	ULDSWがH, LODSWがLの時にはトレイがローディングされている状態なので、アンローディング動作を行う。ULDSWがH→LとなるとLODMをストップさせる。
3	イジェクト	エレベータを下方に移動させ、イジェクト位置まで下降させる。ここでマガジンロックを解除し、MAGSWを確認する。この時MAGSWがLの場合にはエレベータを1Tの位置までパルス送りで移動させる。
4	エレベータ移動	エレベータが1Tの位置まで移動した後、エレベータは2Tの位置まで移動しイジェクト動作が終了する。(スタンバイ状態)

● Magazine insertion operation (マガジン挿入時の動作)

1. When a magazine is inserted, first disc is pulled-in and chucked.

1. マガジンが挿入されたときは、1枚目を引き込んでチャッキングする。



Process contents

1	Magazine insertion	When the magazine is inserted, MAGSW goes H.
2	Elevator shift	First, the elevator moves downward and moves to a specified pull-in position.
3	Loading	The loading motor rotates in forward and pulls in the tray. This makes LODSW to H, and the loading operation completes when LODSW shows L.
4	Chucking	The chucking operation completes by making ELV-M to L and feeding the elevator with the pulse signal and if the value of LPS is within a specified value.

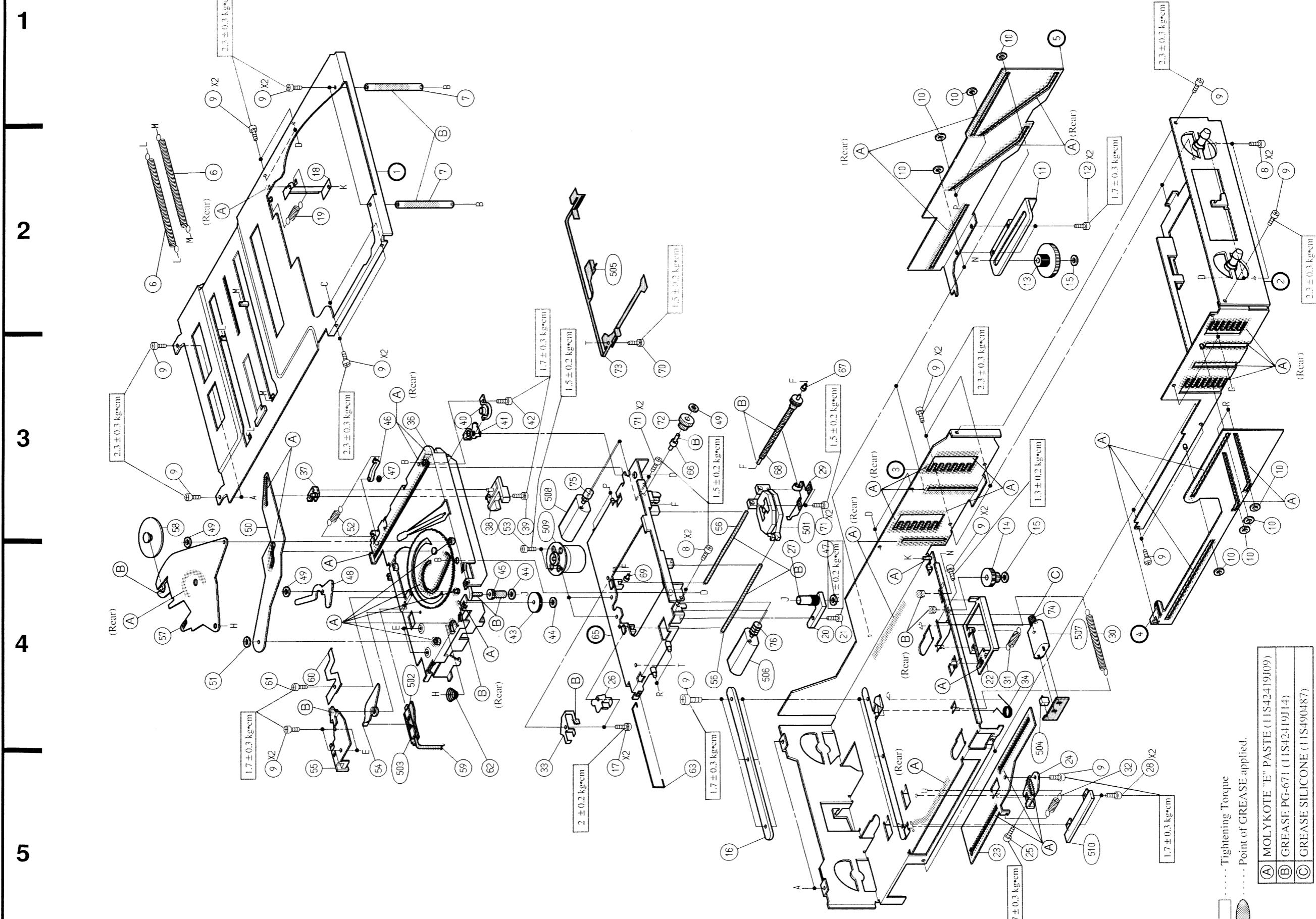
処理内容

1	マガジン挿入	マガジンが挿入されると、MAGSWがHとなります。
2	エレベータ移動	最初にエレベータが下方に移動して、目的の引き込み位置へ移動する。
3	ローディング	ローディングモータを正転させ、トレイを引き込む。これによりLODSWがHになり、LODSWがLになった時点でローディングを終了する。
4	チャッキング	チャッキング動作は、ELV-MをLにして、エレベータをパルス送りにてLPSの値が規定値内であれば動作を終了する。

# Exploded View (CD Mechanism) ● DT24A010

DT SERIES

DT SERIES



1  
2  
3  
4  
5

A | B -21- | C | D | E | F -22- | G | H

- ..... Tightening Torque
  - ..... Point of GREASE applied.
- |     |                                  |
|-----|----------------------------------|
| (A) | MOLYKOTE "E" PASTE (11S42419J09) |
| (B) | GREASE PG-671 (11S42419J14)      |
| (C) | GREASE SILICONE (11S490487)      |

